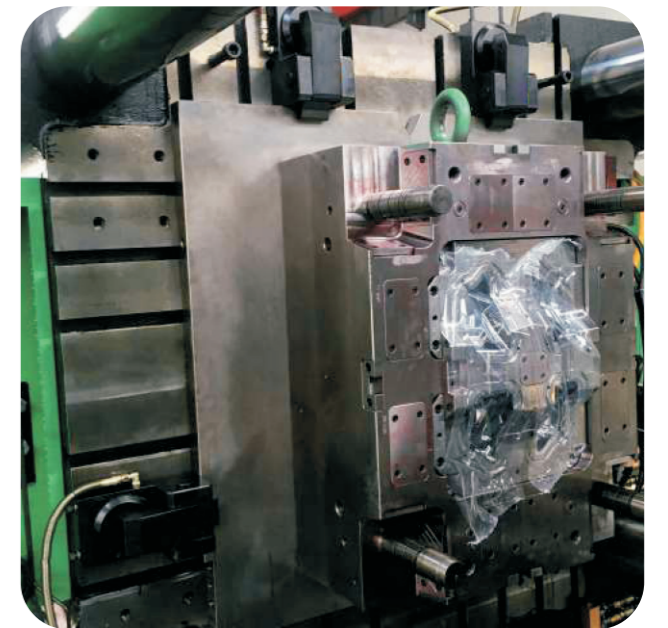




快速换模系统 >>>>>
Quick Die Change System



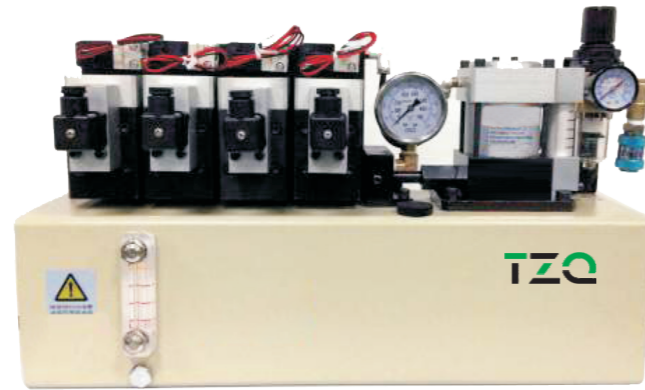
分钟换模
快速换模专家



昆山泰至全精密机械有限公司
kunshan Taito Pml Precision Mechanism Ltd

地址：昆山市开发区新星南路58号
公司网址：www.ks-taizhiquan.com
企业邮箱：tzq@ks-taizhiquan.com

昆山泰至全精密机械有限公司
kunshan Taito Pml Precision Mechanism Ltd



提供給各式射出機、壓鑄機的快速換模專用元件,此系統的使用,不僅減少了閒置時間,並且大大的促進了產能的提升,使得生產管理更為合理化。

The use of this system, which provides specialized components for rapid mold replacement of various injection machines and die-casting machines, not only reduces the processing time, but also greatly promotes the improvement of production capacity, making production management more reasonable.



公司簡介 Company Profile

昆山泰至全精密機械有限公司是一家專業製造和銷售沖床、注塑機、壓鑄機、油壓機等全自動換模設備廠家,其產品包括:全自動換模台車,氣動泵浦組合、夾模器、舉模器、移模臂、電氣控制系統、超負荷保護系統以及滑塊鎖固系統等產品。

公司自2010年成立以來,全體員工秉承“追求卓越,實現高效”的企業文化,以精湛的研發實力,科學的管理模式,誠信的經營態度、完整的售後服務獲得業界的認可,同時以優質的產品質量贏得了客戶和社會的高度評價。

泰至全精機的主導產品為:換模台車、氣動泵單元、舉模器、移模臂、電控操作系統、超負荷保護裝置及滑塊鎖固泵等,普遍運用於各種沖床、射出機、壓鑄機等行業。

公司以顧客至上,客戶滿意,質量第一,持續改進為宗旨,通過提供優質的產品和服務,最大限度滿足客戶的需求!

Kunshan Taizhi Precision Machinery Co., Ltd. is a professional manufacturer and seller of fully automatic mold changing equipment such as punching machines, injection molding machines, die-casting machines, hydraulic presses, etc. Its products include: fully automatic mold changing trolleys, pneumatic pump combinations, mold clamping devices, mold lifters, mold moving arms, electrical control systems, overload protection systems, and slider locking systems.

Since its establishment in 2010, all employees of the company have adhered to the corporate culture of "pursuing excellence and achieving efficiency". With exquisite research and development strength, scientific management mode, honest business attitude, and complete after-sales service, they have gained recognition from the industry. At the same time, they have won high praise from customers and society with high-quality product quality.

The leading products of Taizhi Precision Machine are: mold changing trolley, pneumatic pump unit, mold lifter, mold moving arm, electric control operating system, overload protection device, slide locking pump, etc., which are widely used in various industries such as punch, ejector, die-casting machine, etc.

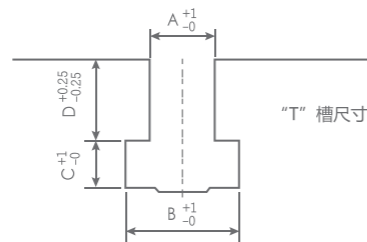
The company adheres to the principle of customer first, customer satisfaction, quality first, and continuous improvement. By providing high-quality products and services, we aim to meet customer needs to the greatest extent possible!

◎ 射出成型機、壓鑄機快速換模系統標準形式選用表

Q.M.C.S typical sections by injection molding machines & mold casting machines.

夾模器Clamper					气动泵組合 Pump Model	建议模板厚度 Plate Thickness		建议T槽尺寸 T-Slot Size				
机台能力 TON	活动側 Moving	数量 PCS	固定側 Fixed	数量 PCS		总夾模力 Total	活动側 Moving	固定側 Fixed	A	B	C	D
150	TY-2	4	TY-2	4	16TON	SP6308U-□-□C	35	35	22 ^{+1.0} ₋₀	37 ^{+1.0} ₋₀	16 ^{+1.0} ₋₀	24±0.25
250	TY-4	4	TY-4	4	32TON		40	40	28 ^{+1.0} ₋₀	48 ^{+1.0} ₋₀	20 ^{+1.0} ₋₀	28±0.25
350	TY-6	4	TY-6	4	48TON		40	40	28 ^{+1.0} ₋₀	48 ^{+1.0} ₋₀	20 ^{+1.0} ₋₀	28±0.25
550	TY-10	4	TY-10	4	80TON	SP1014U-□-□C	50	50	28 ^{+1.0} ₋₀	48 ^{+1.0} ₋₀	23 ^{+1.0} ₋₀	28±0.25
850	TY-16	4	TY-16	4	128TON							
1000	TY-16	6	TY-16	6	192TON							
1300	TY-25	4	TY-25	4	200TON							
1600	TY-25	6	TY-25	6	300TON		50	50	36 ^{+1.0} ₋₀	56 ^{+1.0} ₋₀	25 ^{+1.0} ₋₀	28±0.25

◎ 建议T槽尺寸 / T-Slot Size



◎ 夾模器 / Die Clamp



◎ 氣動泵組合 / Power units



提供給各式射出機、壓鑄機模具多样性的快速換模專用元件，此系統的使用，不僅減少了閑置時間，並且大大促進了產能的提升，使得生產管理更為合理化。

Provides different injection molding and hydraulic mold casting machinery with many types of efficient quick mold changing systems, Which highlight time saving and enhanced productivity for more rationalized production management.



◎ Q.M.C.S.選用指引 / Q.M.C.S. Selection

模板 Mold Plate	換模方式 Mold Change	使用夾模方式 Clamping type	條件與特征 Condition & Character
不能統一情形時 No Union	吊車 (垂直放入) Put Vertically	移動式夾模器 Moving Clamper	必須在盤面上加T溝，或者安裝T溝板 To Be With T-Slot
可以統一情形時 Union	吊車 (垂直放入) Put Vertically	固定式移動式夾模器 Fixed & Moving Clamper	夾模器固定於盤面或在盤面上移動 Clamper Fixed or Moving On Plate
	臺車 (水平放入) Put Horizontally	固定式夾模器 Fixed Clamper	將輸送滾輪 (或滑軌) 安裝於盤面，必須有臺車或模具交換臺，換模時間極短，作業最簡單，亦可全自動化。 Install roller or sliding rail upon the plate. Use cart of mold exchange table for the shortest possible mold changing time and easy operation.

注：為使您能依照模具尺寸、射出成型機、壓鑄機的規格來選定，準備有以各種機型。請考慮工廠的布局以及將來的生產計劃，待標準化之後，選擇最合適的方式。

The following specifications are available for you to choose in accordance to your injection molding requirements and actual productionsituations. Make sure of your production plans, standard production procedure before choosing the product that suits you best.

▼ 模具垂直放入圖例

DEMONSTRATION OF PUT MOLD VERTICALLY

一般射出成型機或壓鑄機模具垂直放入方式使用最多，提供夾模器可移開方式換模系統，不僅減低機臺的閉置時間，並且促進了產能的提升，使用生產管理更為合理化、自動化。

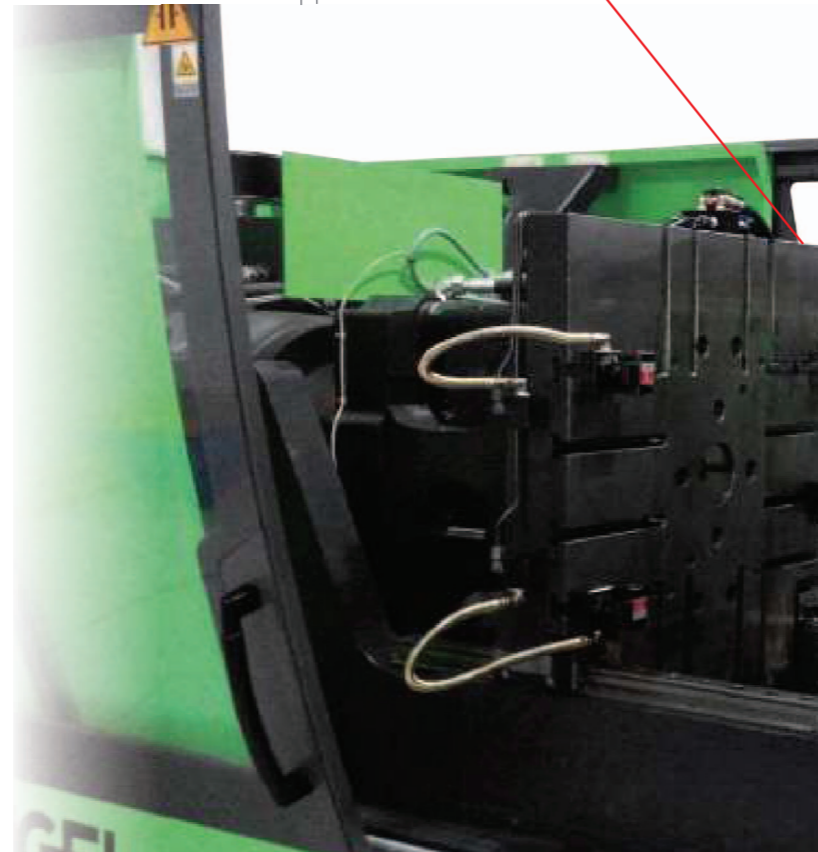
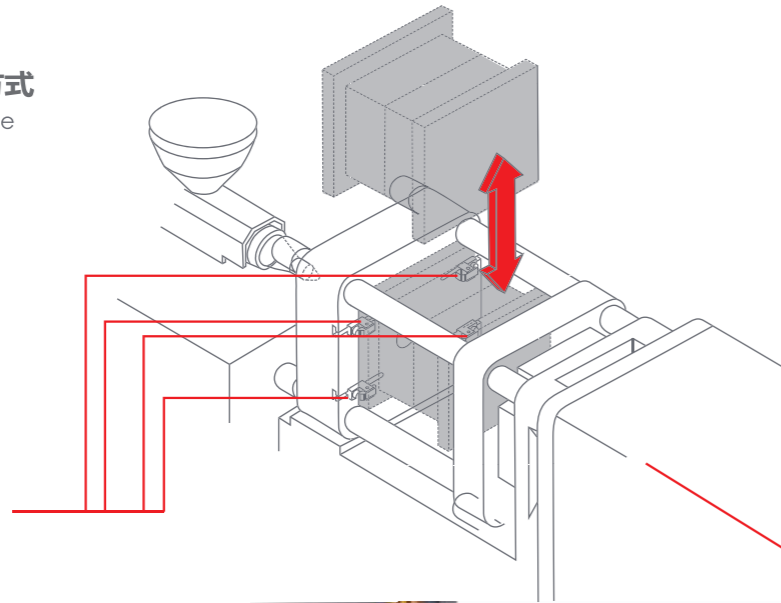
Most of the molds for injection molding and mold casting machines are fitted vertically. however adopts removable mold changing system that not only saves idle time for enhanced production efficiency but also spurs even rationalized and automated production management.

模具垂直放入時交換方式
Vertical Type Mold Change

◎ 夾模器 / Die Clamp



◎ 氣動泵組合 / Power units



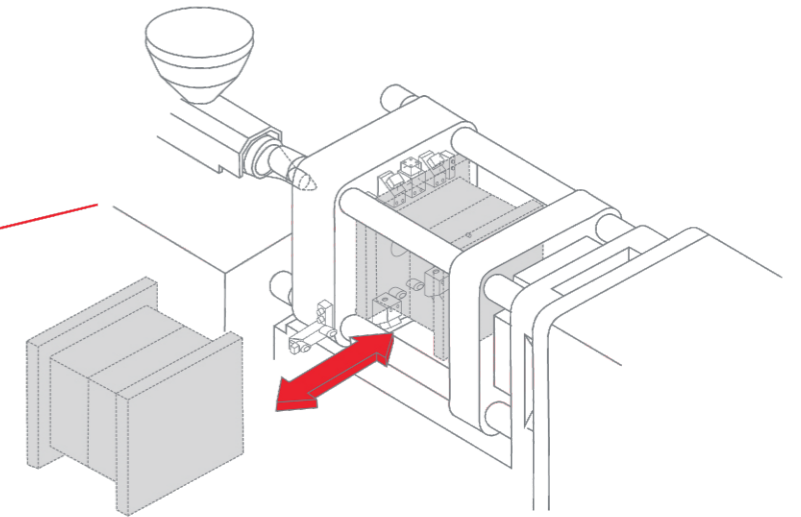
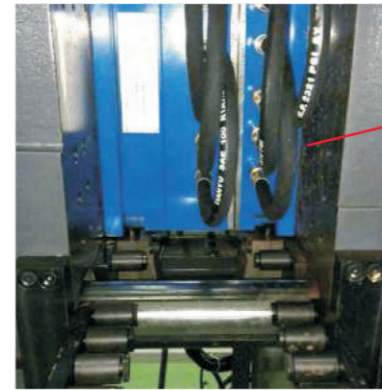
▼ 模具水平放入圖例

DEMONSTRATION OF PUT MOLD HORIZONTALLY

模具水平放入時，可使用換模臺車方式，更換模具則更安全性，並達成整廠快速換模系統之規劃，使得模具之輸送及儲存更具自動化。

When molds are fitted horizontally, mold changing cart may be used for safe operation and realization of quick mold changing for entire factory with increased automation of mold delivery and storage.

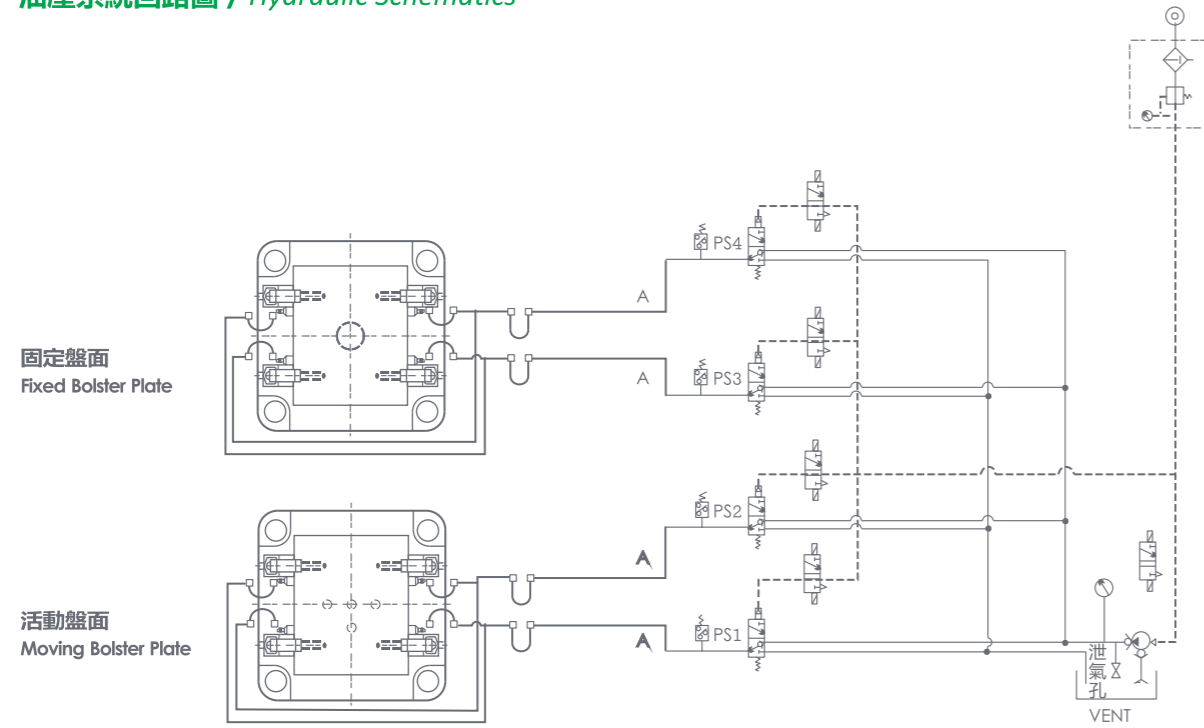
模具水平放入時交換方式
Horizontal Type Mold Change



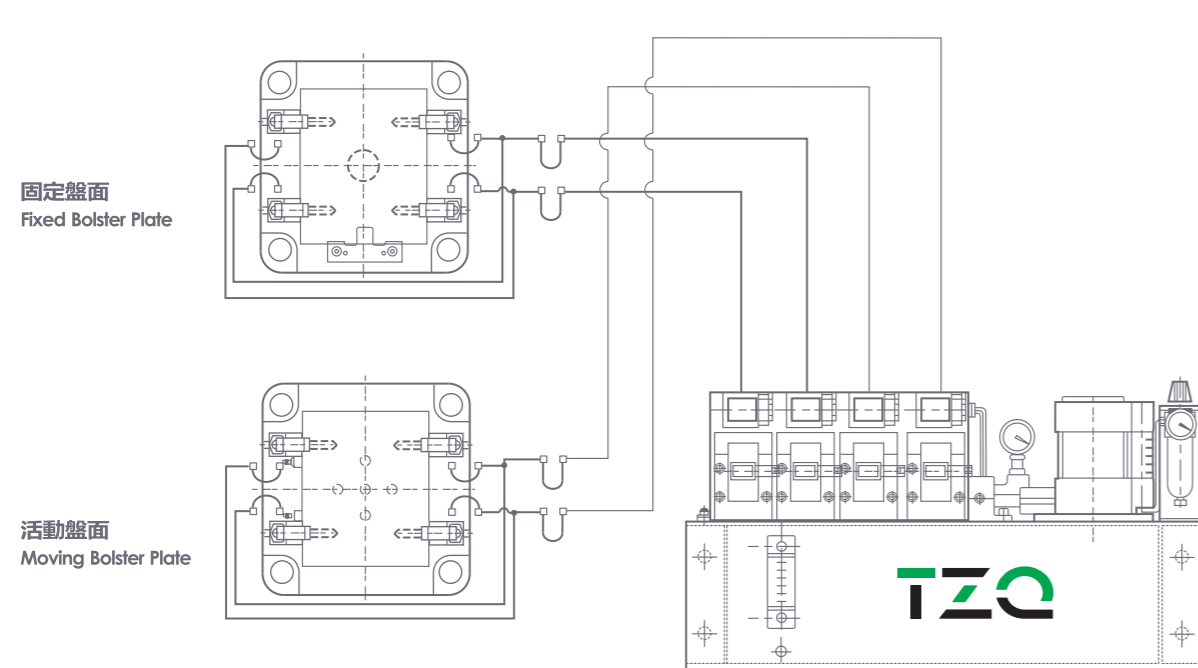
◎ 操作箱 / Control box



◎ 油壓系統回路圖 / Hydraulic Schematics

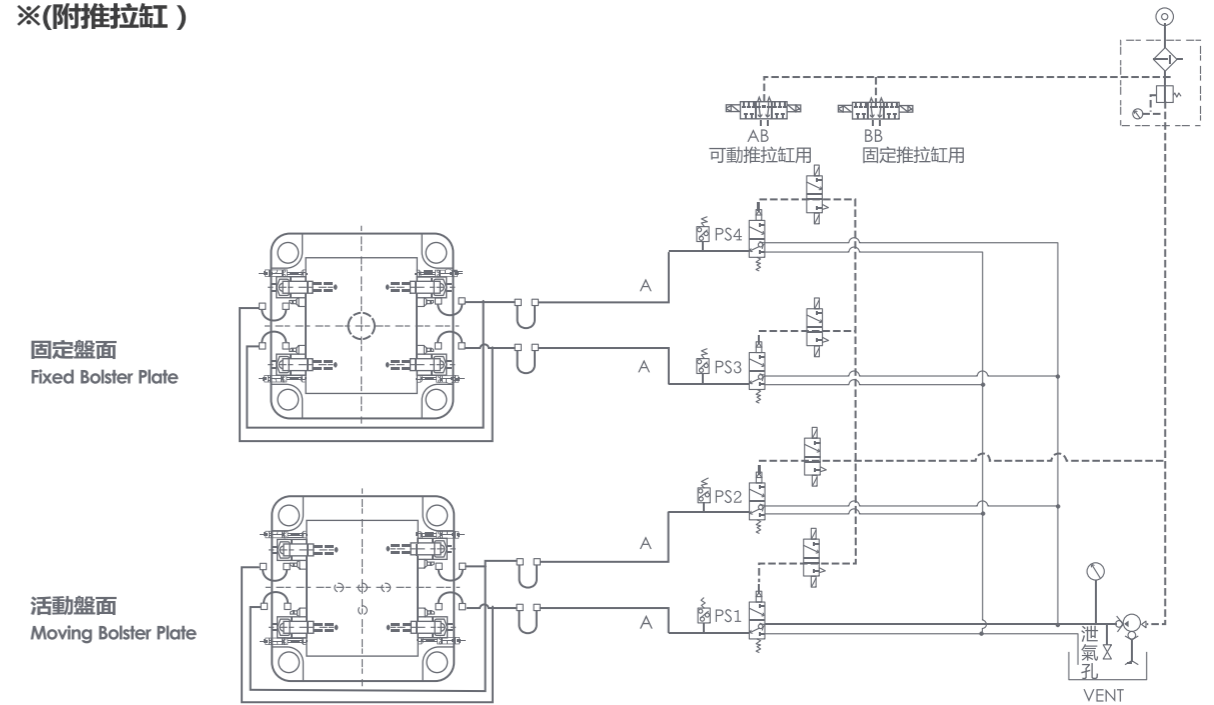


◎ 油壓系統回路圖 / Hydraulic Schematics

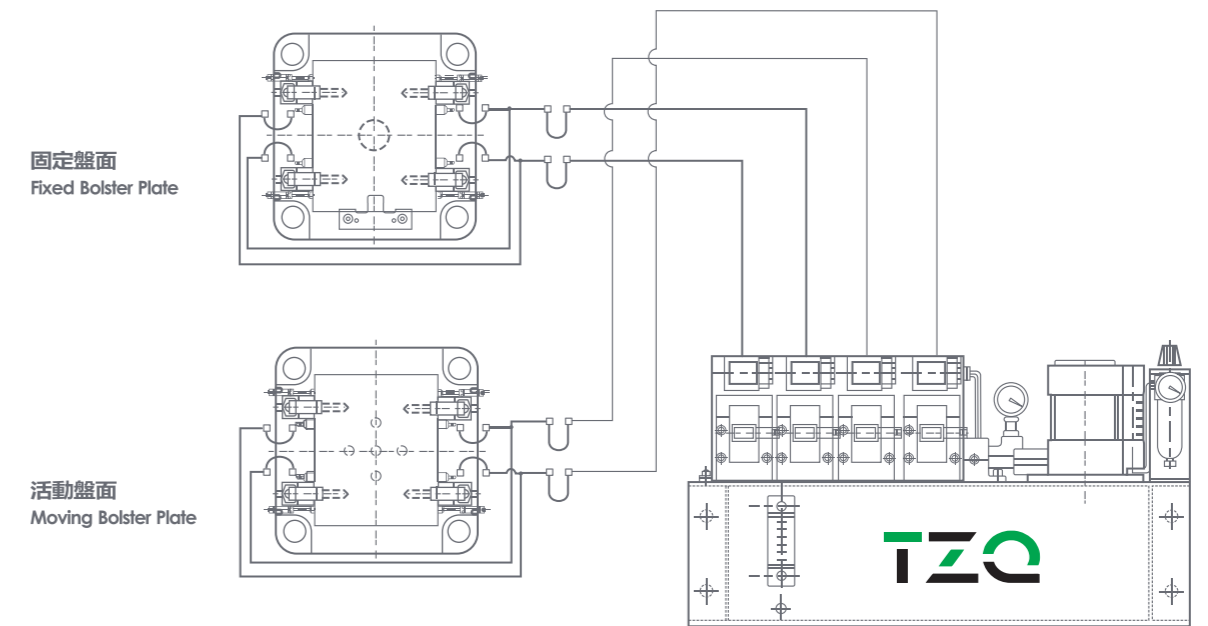


◎ 油壓系統回路圖 / Hydraulic Schematics

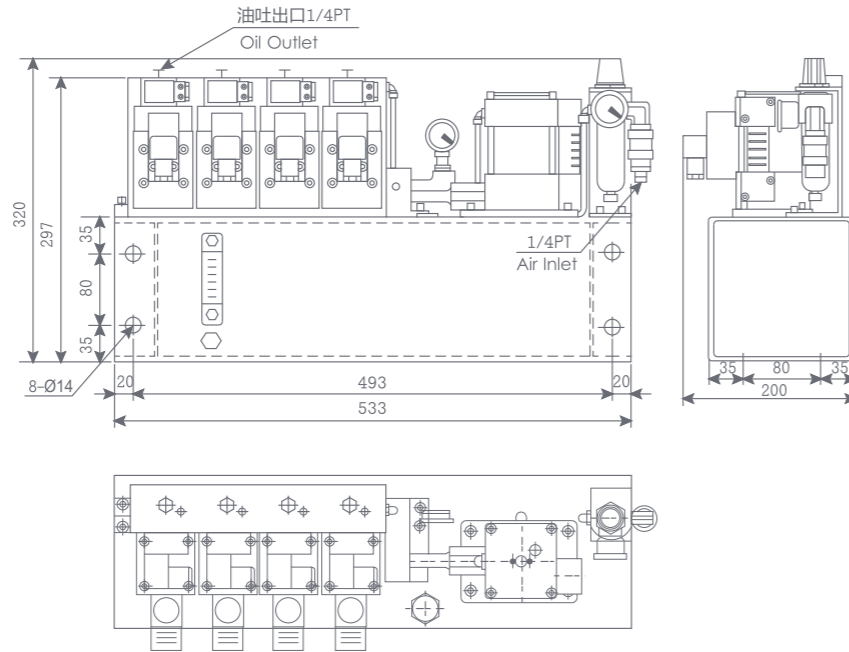
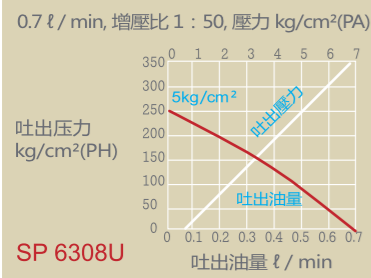
※(附推拉缸)



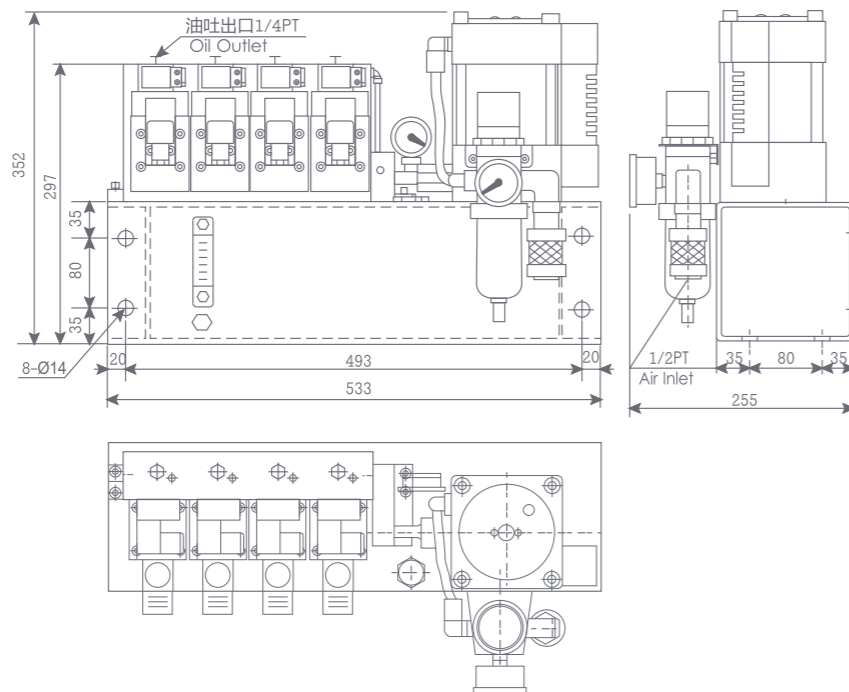
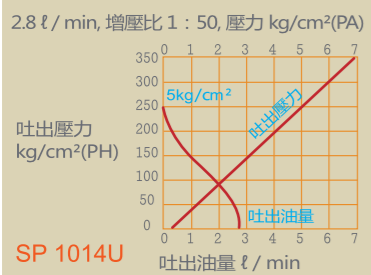
◎ 油壓系統回路圖 / Hydraulic Schematics



◎ 型號 / Model: SP6308U Pump



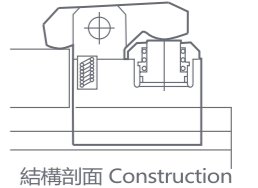
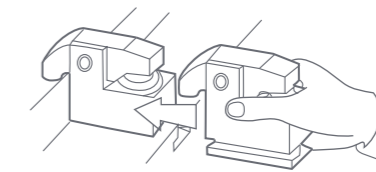
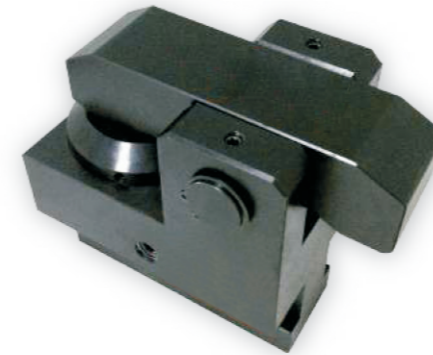
◎ 型號 / Model: SP1014U Pump



此型夾模器以杠桿原理作用，夾持模沿，並不需“U”溝，因此有更寬廣的適用範圍。

Because this lever-type clamp does not require a U-cut on the die shoe, it may be used in a wide range of applications. The base of the clamp is machined to fit the T-slot on the bolster. The flange-mount model clamp may be bolted onto the bolster. The automatic slider model makes remote control possible.

◎ 規格特性 / Specifications

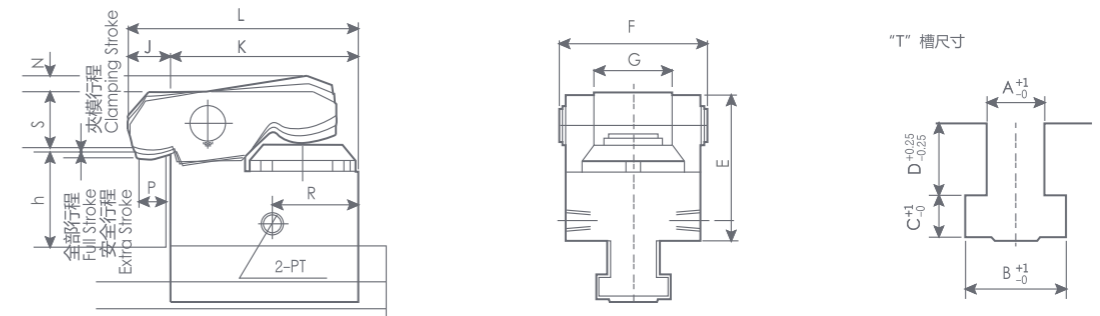


結構剖面 Construction

※ 安全行程為全部行程與夾模行程之差值，為特別的安全預留量。
 Extra Stroke is the difference value between full stroke and clamping stroke with the extra space for safe operation.

型號 Model	TY-2	TY-4	TY-6	TY-10	TY-16	TY-25
夾持力(於油壓250Kg/cm ²)tons Clamping Force(at 250Kg/cm ²)	2	4	6.3	10	16	25
全部行程(X)mm Full Stroke mm	7	7	8	8	8	8
夾模行程(Y)mm Clamping Stroke mm	2	3	4	3	3	3
安全行程(Z)mm Extra Stroke mm	5	4	4	5	5	5
夾模器缸體容量(全行程)cc Cylinder Capacity at Full Stroke cc	6.5	13.2	22.3	37	61	93

◎ 外型尺寸 / Outline Dimensions



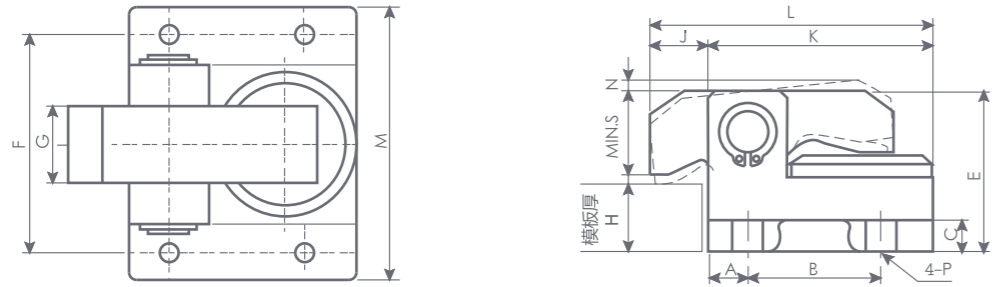
型號 Model	MIN.E	F	G	J	K	L	MAX.N	P	R	MIN.S	PT	MIN.C	型號 Model	A	B	C	D	選用泵浦 Power units model
TY-2	59	65	28	22	85	107	10	12.5	48	27	1/8	9.5	TY-2	22	37	16	24	SP6308U-□-□
TY-4	85	87	40	30	120	150	10	16	58	33	1/4	12	TY-4	22	37	16	24	
TY-6	94	97	44	34.5	133	167.5	11	20	68	40	1/4	14	TY-6	28	48	20	28	
TY-10	105	110	50	30	165	195	11	20	82	53	1/4	16.5	TY-10	28	48	20	28	SP1014U-□-□
TY-16	120	125	60	35	200	235	12	20	96	67	1/4	19	TY-16	28	48	23	28	
TY-25	133	155	73	35	240	275	13	20	110	81	1/4	22	TY-25	36	56	25	28	

※ 註：模沿厚度(h)及T槽(A.B.C.D.)尺寸如為既有(特殊)尺寸，請於訂購時確認之。
 before purchase, please verify mold edge thickness (h) and T Slot (A.B.C.D.) as standard or special dimensions.

▼ TY-B & C 型夾模器型號

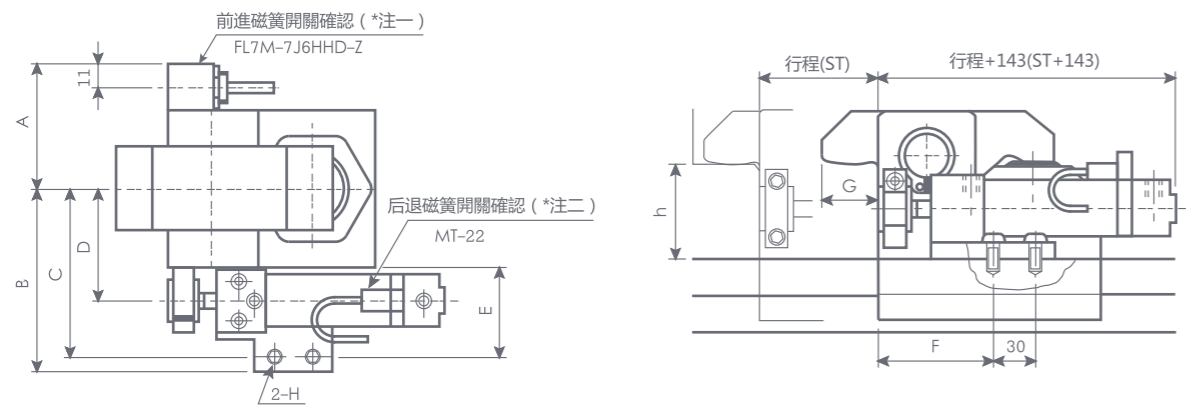
TY-B&C TYPE DIE CLAMP MODELS

◎ TY-B 型夾模器型號 (外型尺寸) / TY-B Type Die Clamp Models (Outline Dimensions)

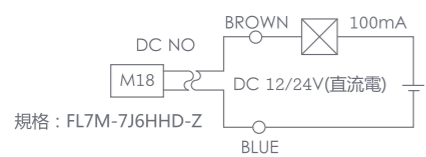


型號 Model	A	B	C	MIN.E	F	G	M	J	K	L	N	MIN.S	P
TY-2B	15	50	12	59	80	28	100	22	85	107	10	27	M10×25L 螺絲 Screw
TY-4B	15	72	18	85	110	40	135	30	120	150	10	33	M12×40L 螺絲 Screw
TY-6B	28.5	76	25	94	120	44	150	34.5	133	167.5	11	40	M16×50L 螺絲 Screw

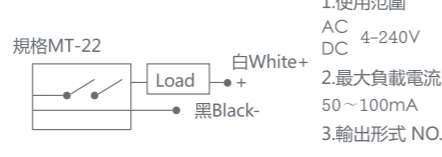
◎ TY-C 型夾模器型號 (外型尺寸) / TY-C Type Die Clamp Models (Outline Dimensions)



*注一 前進磁簧開關接線圖：



*注二 后退磁簧開關接線圖：



	A	B	C	D	E	F	G	H (螺絲：臺盤攻牙深度)	氣缸規格
TY-2C	51	93	86	54	57	82	22	M10×25L:×8.6鑽×25深	MB32*行程
TY-4C	62	104	97	65	57	82	30	M10×25L:×8.6鑽×25深	MB32*行程
TY-6C	67	127	115	75	70	85	30	M12×25L:×10.3鑽×25深	MB40*行程
TY-10C	77	132	120	80	70	85	30	M12×25L:×10.3鑽×25深	MB40*行程
TY-16C	82	142	130	90	70	85	35	M12×25L:×10.3鑽×25深	MB40*行程
TY-25C	94.5	154.5	142.5	102.5	70	85	35	M12×25L:×10.3鑽×25深	MB40*行程

▼ 快速換模系統之相關零件

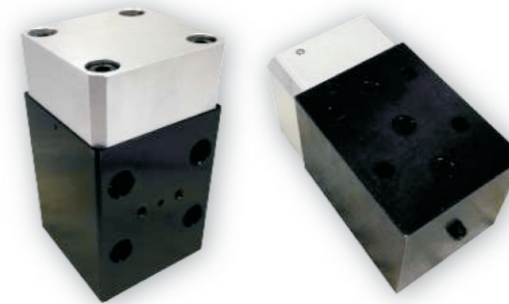
RELATED PRODUCTS FOR PRESS MACHINE USE

◎ 氣動泵單體 / Air Pump

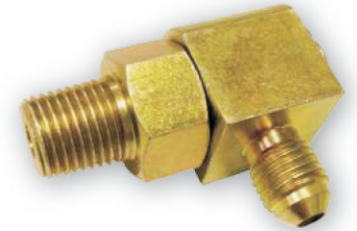


	空氣壓力5kg/cm ² 時出力 (AIR AT5kg/cm ²)	增壓比		空氣壓力5kg/cm ² 時出力 (AIR AT5kg/cm ²)	增壓比
06	420 (kg/cm ²)	1:84	12	100 (kg/cm ²)	1:20
07	300 (kg/cm ²)	1:60	14	80 (kg/cm ²)	1:16
08	250 (kg/cm ²)	1:50	16	50 (kg/cm ²)	1:10
09	200 (kg/cm ²)	1:40	20	40 (kg/cm ²)	1:8
10	150 (kg/cm ²)	1:30	24	26 (kg/cm ²)	1:5

◎ AV氣控閥 / Air Control Valve

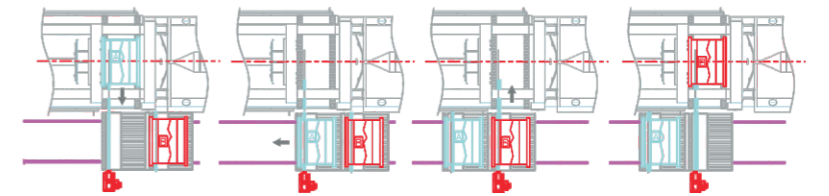


◎ 回轉接頭 / Rotary Unit

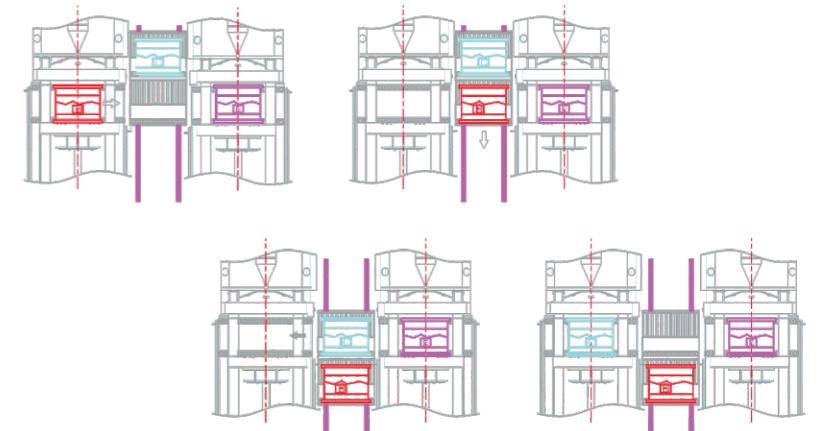


◎ 換模臺車系統 / Examples of Die Cart System

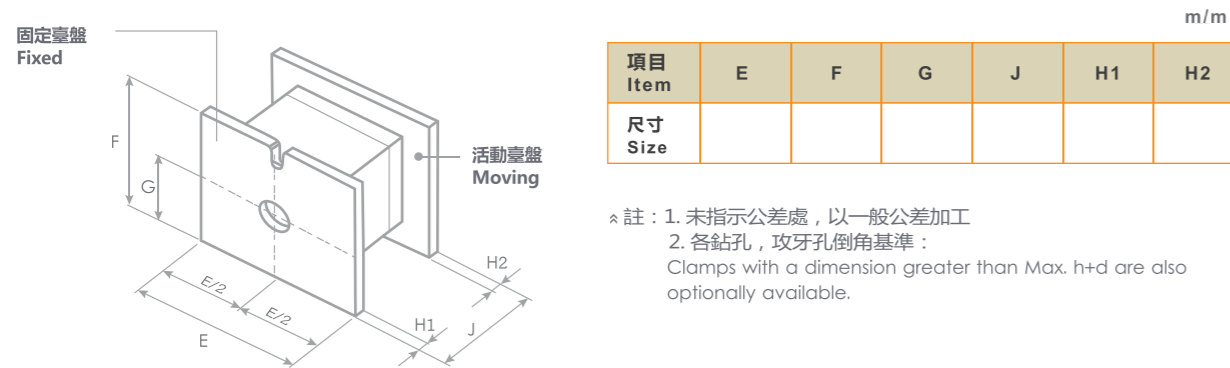
单机使用
Single-Machine Use



两机共用
Sharing Of Two Machines



◎ 模具外型尺寸圖 / Die Dimentions



◎ 設備部份 / Part About Press

A1 新購或舊有 / New or Existing	<input type="checkbox"/> 新購 / New	<input type="checkbox"/> 舊有 / Existing					
A2 製造商及型號 / Manufacturer and model	製造商 Manufacturer	型號 Model					
A3 射出及壓鑄能力 / Tonnage	<input type="checkbox"/> tf	<input type="checkbox"/> 美制 / US	<input type="checkbox"/> 公制 / Metric				
A4 固定臺盤尺寸 / Fixed dimensions	(E)	X(F)					
A5 活動台盤尺寸 / Moving dimensions	(E)	X(F)					
A6 T槽 (詳細測量) / T-slot	<input type="checkbox"/> 有 / Yes	<input type="checkbox"/> 沒有 / No	尺寸 Dimension	a: <input type="text"/>	c: <input type="text"/>	b: <input type="text"/>	d: <input type="text"/>

◎ 模具部份 / Part About Dies

B1 最大重量 / Max. weight	<input type="text"/>	kg (lbs)		
B2 最大尺寸 / Max. dimensions	(W) <input type="text"/>	x(W) <input type="text"/>	x(H) <input type="text"/>	mm(inch)
B3 螺栓用 "U" 槽 / U-cut for bolting	<input type="checkbox"/> 有 / Yes	<input type="checkbox"/> 沒有 / No		
B4 模具邊沿厚度 / Die shoe thickness	<input type="text"/>	mm(inch)		
B5 模具底部 / Bottom	<input type="checkbox"/> 平面 / Plain	<input type="checkbox"/> 格子狀 / Lattice		
B6 特殊需求 / Special requirements	<input type="text"/>			

◎ 基本資料 / Your Information

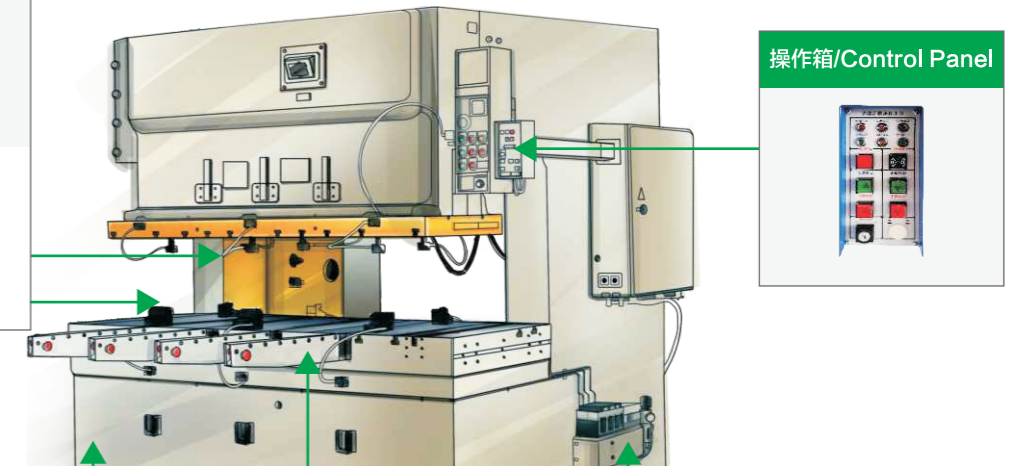
公司名稱 / COMPANY:	聯絡人 / ATTN:
電話 / TEL:	傳真 / FAX:
地址 / ADD:	

冲压篇 Q.M.D.S

夹模器/Die Clamp Series



TX型夹模器 (直拉式)
TY型夹模器 (压板式)
TXDieClamp
TYDieClamp



移模器/Die Arm Series



共有RC RD RE RF四种型式
RC型移模臂
RD型移模臂
RE/RF型移模臂
RC RD RE RF Bolster
Extension Series

举模器/Die Lifter Series



共有DL DU DR DB四种型式
DL型举模器 (油压式)
DB型举模器 (滚珠式)
DR/DU举模器 (弹簧式)
RL Die Lifter
RB Die Lifter
RR/DU Die Lifter

气动泵组合/Power Unit



以气动方式作动，出力为油压
气动泵组合 (1回路/2回路/3回路/4回路)
Power Unit Selection Of System
Components
(1Circuit/2Circuits/3Circuits/4Circuits)

液壓快速換模系統

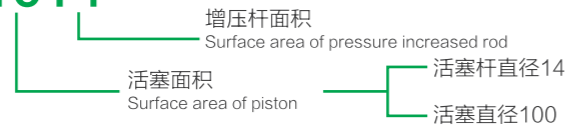
Hydraulic quick mould change system

冲压篇 Q.M.D.S

气动泵组选用

Selection of pneumatic pump set

FP 1014



C: 夹模器 / Die Clamp
D: 举模器 / Die Lifter

FP 1014U-1/回路数	D/回路型式	回路分配使用情形	System Configuration
1	C	回路使用于夹持上模	One circuit for clamping the upper die
	D	回路使用于夹持下模	One circuit for clamping the lower die
2	2C	回路使用于同时夹持上下模	One circuit for simultaneously clamping the upper and lower dies
	CD	一个回路使用于夹持上模, 且另一个回路使用于下模	One circuit for upper die One circuit for lower die
3	2C	一个回路使用于同时夹持上下模, 且另一个回路使用于举模器	Two circuits for damping the upper and lower dies One circuit for the lifter
	CD	一个回路使用于夹持上模, 另一个回路使用于下模, 且第三个回路使用于举模器	Two circuits for damping the upper and lower dies One circuit for the lifter
4	CD	二个回路使用于夹持上模交叉方式, 另一个回路使用于夹持下模, 且第四个回路使用于举模器	Two circuits for damping the upper die One circuit for clamping the lower die One circuit for the lifter

电压 Voltage: DC 24V, 110, 220V

夹模器选用

Selection of Clamps

型式之选定

Basic Clamp Selection

模具边沿有 U 槽设计, 采用 CX 型
Select CX Clamp when die U-slots provided

模具边沿无 U 槽设计, 采用 CY 型
Select CY Clamp when die U-slots not provided

夹模器夹持力的计算

Determine the Clamping Force (Model)

夹模器总夹持力=冲床冲压能力的20%
(C clamping Force) = (20 % Press Tonnage)

夹模器数量

Determine the Number of Clamps Required

根据模具的大小与冲床出力的吨数来决定
Determine the number of clamps according to the dimensions and configuration of the dies and the T-slot arrangement on the press

上下模所需夹持力的分配

Distribution of Upper and Lower Clamping Force

(上模夹持力) : (下模夹持力) = 3 : 2
(Clamping the Upper Die) : (Clamping the Lower Die Clamping Force) / Clamps Number

单一夹模器夹持力 = 上模或下模夹持力 / 夹模器数量
(Single Die Clamping Force) = (Upper or Lower Die Clamping Force) / Clamps Number

若依所用螺栓之规格推算夹持力, 如下表

If determine and calculate the clamping force by using the size of cap screw, pls use the list below

螺栓规格 Screw Bolt	M16	M18	M20	M24	M30	M38
夹持力 Clamping Force	3	4	6	10	15	20

上列夹模器夹持力与其数量应依实际作业需要修正, 并且供夹模之模具边沿厚度需标准化, 以利配合夹模器之使用。
The above list for the clamping force and quantities of the die clamping should be used according to the actual operation. The thickness of the mould base (bottom plate for die clamping to clamp) should be standardized.

液壓快速換模系統

Hydraulic quick mould change system

冲压篇 Q.M.D.S

气动泵组合 外形尺寸

Hydraulic Power Units Specifications



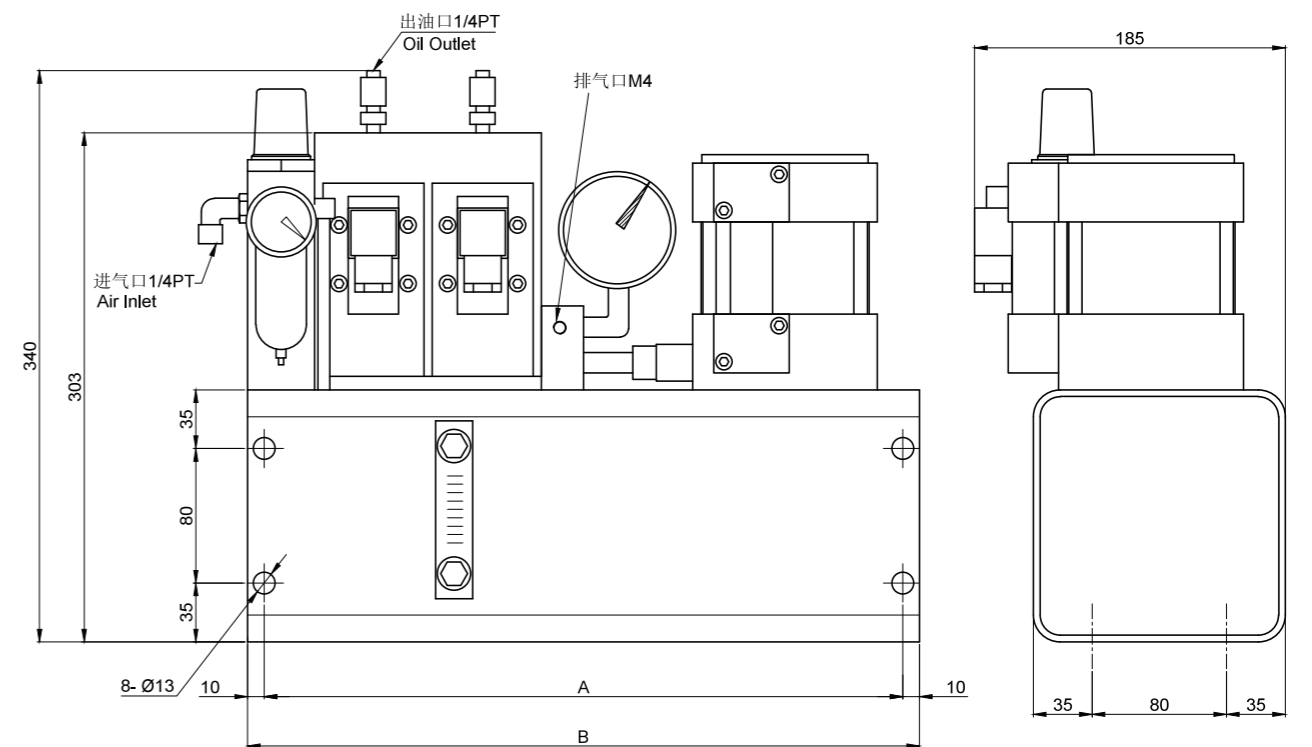
FP1014-1D

FP1014-2C

FP1014-32CD

FP1014-43CD

外型尺寸



平面图

产品规格

Specifications

型号 Model	回路数 Total Circuit	A	B	油箱全容量 (L) Reservoir Capacity	可用容量 (L) Available Lubricant	重量 (kg) Weight	使用油 Lubricant
FP1014-1	1	353	393	6	3.8	30	一般液压油 Standard hydraulic oil
FP1014-2	2	353	393	6	3.8	34	
FP1014-3	3	423	463	7.5	4.8	42	
FP1014-4	4	493	533	9	5.8	50	

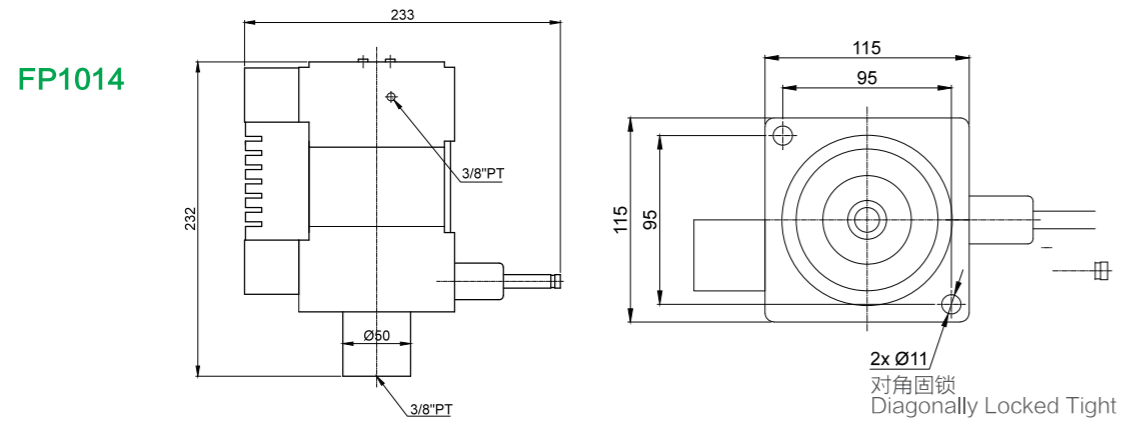
液壓快速換模系統

Hydraulic quick mould change system

冲压篇 Q.M.D.S

气动泵组合选用

Power Unit -Specification of System Components



产品规格

Specifications

驱动流体 Screw Bolt	空气使用压力范围 Air Pressure	使用温度范围 Operating Temperature	使用油 Lubricant	单一重量 Weight
空气 Air	2~6kg/cm ² (2~6bar)	-5~60°C	一般液压作动油 (IOS VG32-VG68)	5kg

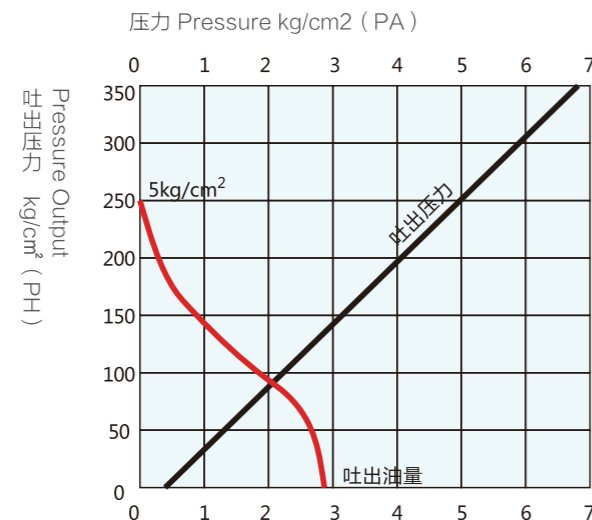
品质不断改良, 使用前请电话确认
Quality is improving, Please confirm by phone before use

1. 空气消耗量 MAX=0.8Nm³/min
Air consumption MAX=0.8Nm³/min

2. 须大流量请指示说明
Please refer to instructions for large flow

2. 品质不断改良, 使用前请电话确认
Specifications are subject to change, Please phone to confirm values

FP1014型 2.8 l/min 增压比 Pressure Ratio 1: 50



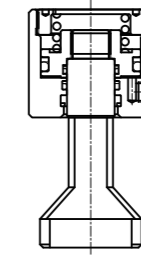
液壓快速換模系統

Hydraulic quick mould change system

冲压篇 Q.M.D.S

快速換模系統-CX 夾模器

RUIJIE QDCS-CX Clamb



剖面
Construction



示图

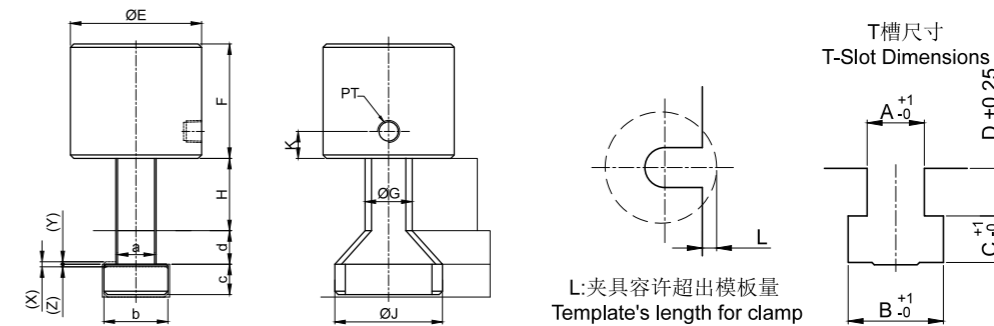
特性规格

Specifications

Unit: mm

型号 Model	CX-2	CX-4	CX-6	CX-10	CX-16	CX-25
夹力 Clamping	2	4	6	10	16	25
总行程 Full Stroke	8	8	8	8	8	8
夹具行程 Clamping Stroke	4	3	3	3	3	3
预留行程 Extra Stroke	4	5	5	5	5	5
油缸总容量 Cylinder Full Stroke	7	13	21	32	54	76

使用油压压力: 250kg/cm² (Clamping Force at 205kg/cm²), 安全行程为全部行程与夹模行程之差值, 为特别的安全预留量。
Extra stroke is the difference between full stroke and clamping stroke with extra space allowed for safe operation.



L: 夹具容许超出模板量
Template's length for clamp

产品规格

Specifications

Unit: mm

型号 Model	ØE	F	ØG	ØJ	max.H+d	max.L	min.C	K	PT
CX-2	53	52	17	38	80	17	8	12	PT1/8
CX-4	68	61.5	23	59	90	20	10	15	PT1/4
CX-6	78	68	28	64	100	25	14	16	
CX-10	98	71	38	79	110	30	17	16	
CX-16	127	78	48	88	120	38	20	16	

备注: 夹具A B C D 尺寸配合T槽尺寸制作。

Note: The sizes of clamps a, b, c and d are made based on the size of tslot.

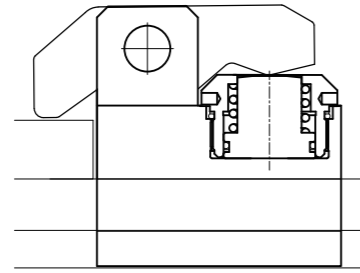
液壓快速換模系統

Hydraulic quick mould change system

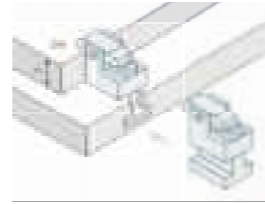
冲压篇 Q.M.D.S

快速換模系統-CY 夾模器

RUIJIE QDCS-TB Clamb



剖面
Construction



示图

特性规格

Specifications

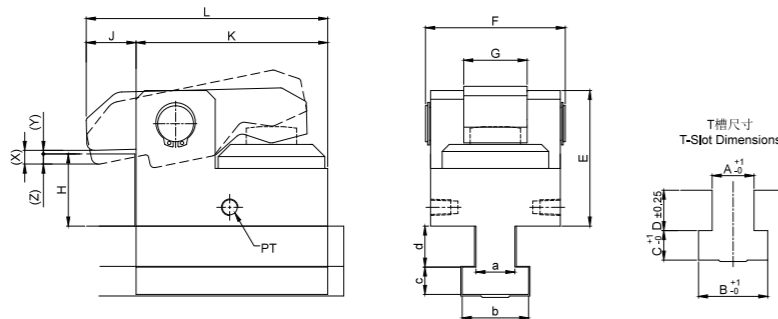
Unit: mm

型号 Model	CY-2	CY-4	CY-6	CY-10	CY-16	CY-25
夹力 Clamping	2	4	6	10	16	25
总行程 Full Stroke	8	8	8	8	8	8
夹具行程 Clamping Stroke	3	3	3	3	3	3
预留行程 Extra Stroke	5	5	5	5	5	5
油缸总容量 Cylinder Full Stroke	7.5	13	21	38	55	98

使用油压压力: 250kg/cm² (Clamping Force at 205kg/cm²), 安全行程为全部行程与夹模行程之差值, 为特别的安全预留量。
Extra stroke is the difference between full stroke and clamping stroke with extra space allowed for safe operation.

外形尺寸

Dimensions



产品规格

Specifications

Unit: mm

型号 Model	L	K	J	min.(H)	max.E	F	G	min.C	P
CY-2	107	85	22	25	59	65	28	9.5	PT1/4
CY-4	150	120	30	25	85	87	40	12	
CY-6	167.5	133	34.5	30	94	97	44	14	
CY-10	195	165	30	40	115	110	50	16.5	
CY-16	235	200	35	40	120	130	60	19	
CY-25	275	240	35	45	143	150	70	22	

液壓快速換模系統

Hydraulic quick mould change system

冲压篇 Q.M.D.S

快速換模系統-DL 油壓舉模器 (滾輪型)

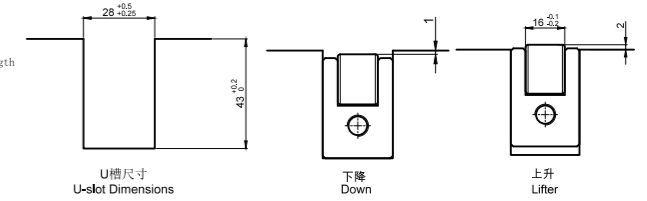
RUIJIE QDCS-DL DieLifter (Roller Type)



DL-28 Dimensions

DL-28 500
外观长度 Overall Length
宽度 Width

选用标准: 两条2吨以下模具
四条3吨以下模具

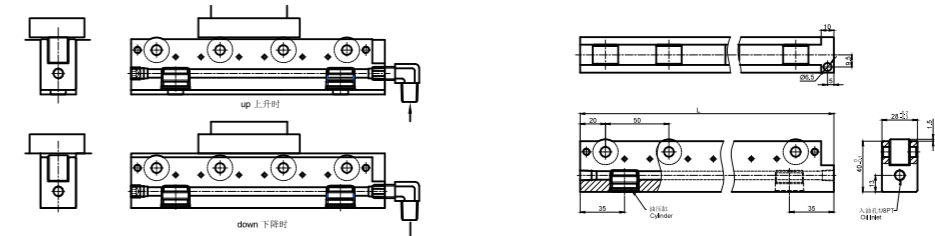


特性规格

Specifications

Unit: mm

基本形式 Basic Model	Unit	DI28	DI50
单一缸体举模力 Lifting Force Per cylinder	tons	0.5	1.1
工作油压 Working Hydraulic Pressure	kgf/cm ²	250	250
工作行程 Working Stroke	mm	3.5	3
单一缸体容油量 One Cylinder Capacity	cc.	0.6	1.4



产品规格

Specifications

Unit: mm

型号 Model	总长度 (mm) Overall	滚轮数 Roller Qty	载模力 (kgf) Die Load Capacity	油压缸 (kg) Lift Cylinder	
				数量 (pcs)	举模力 (kgf) Lift Force
DL28-400	400	8	560	3	1500
DL28-500	500	10	720	4	2000
DL28-600	600	12	880		2000
DL28-700	700	14	1040		2000
DL28-800	800	16	1200	5	2500
DL28-900	900	18	1360		2500
DL28-1000	1000	20	1520		2500
DL28-1100	1100	22	1680	6	3000
DL28-1200	1200	24	1840		3000
DL28-1300	1300	26	2000		3000
DL28-1400	1400	28	2160	8	4000
DL28-1500	1500	30	2320		4000

液壓快速換模系統

Hydraulic quick mould change system

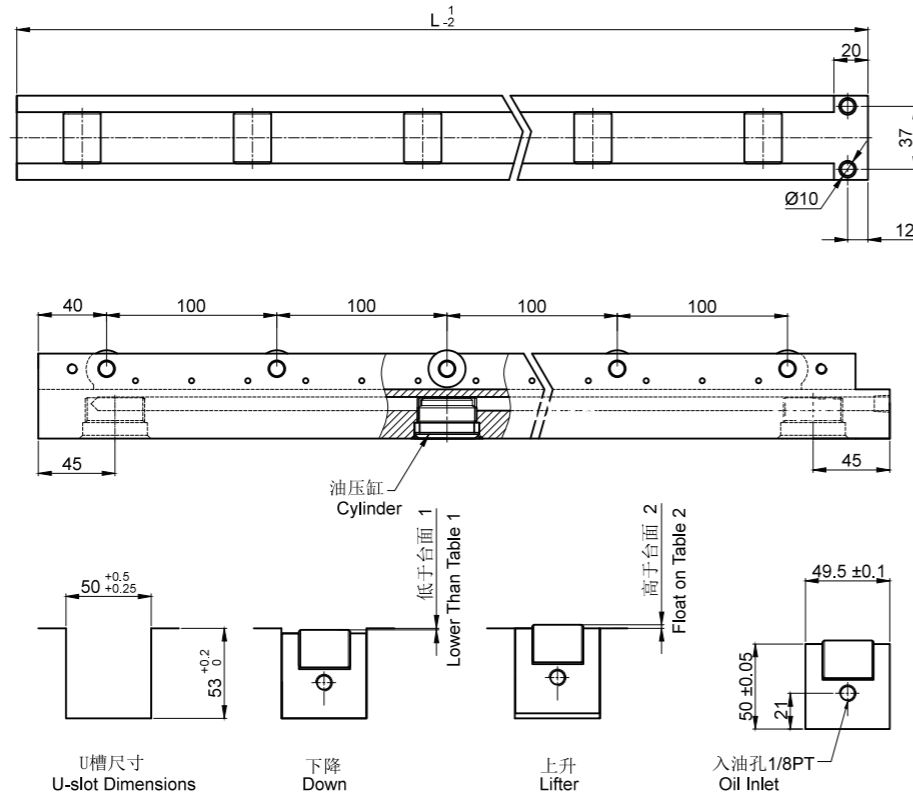
冲压篇 Q.M.D.S

快速換模系統-DL 油壓舉模器 (滾輪型)

RUIJIE QDCS-DL DieLifter (Roller Type)

DL-50

選用標準：
兩條3噸以下模具
四條5噸以下模具



產品規格

Specifications

Unit: mm

型號 Model	總長度 (mm) Overall	滾輪數 Roller Qty	載模力 (kgf) Die Load Capacity	油壓缸 (kg) Lift Cylinder	
				數量 (pcs)	舉模力 (kgf) Lift Force
DL50-400	400	4	800	4	4000
DL50-500	500	5	1000		
DL50-600	600	6	1200		
DL50-700	700	7	1400		
DL50-800	800	8	1600	4	4000
DL50-900	900	9	1800		
DL50-1000	1000	10	2000		
DL50-1100	1100	11	2200	6	6000
DL50-1200	1200	12	2400		
DL50-1300	1300	13	2600		
DL50-1400	1400	14	3000	8	8000
DL50-1500	1500	15	3200		
DL50-1600	1600	16	3400		
DL50-1700	1700	17	3600		

液壓快速換模系統

Hydraulic quick mould change system

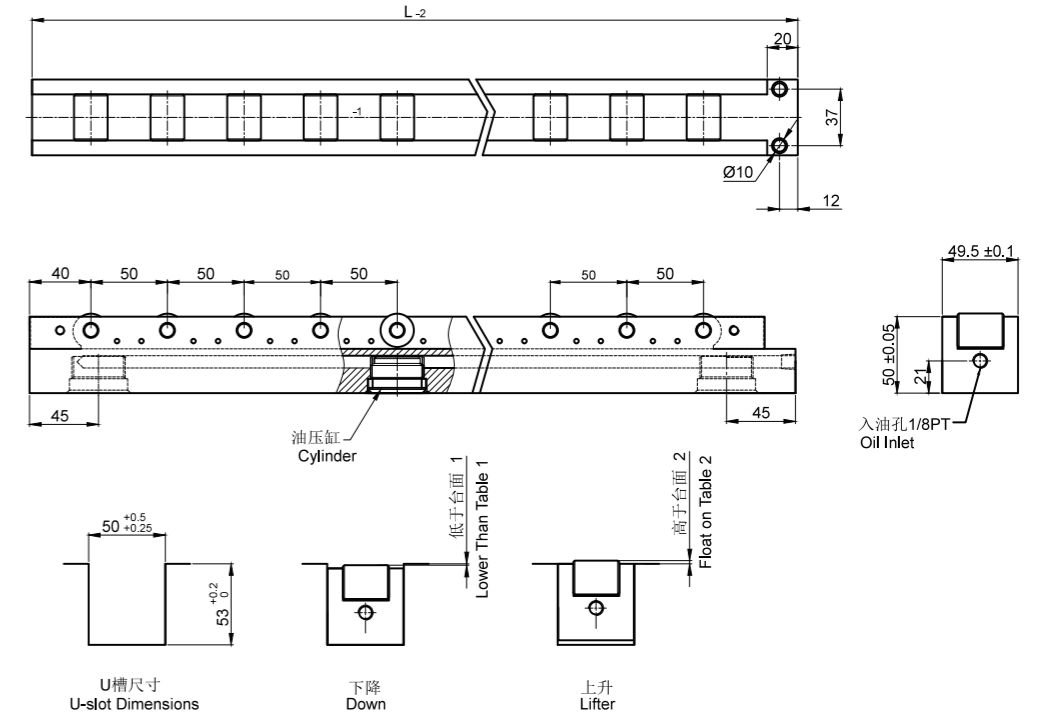
冲压篇 Q.M.D.S

快速換模系統-DL 油壓舉模器 (滾輪加密型)

RUIJIE QDCS-DL Lifter (Roller Type distance 50)

DL-50M

選用標準：
兩條5噸以下模具
四條8噸以下模具



產品規格

Specifications

Unit: mm

型號 Model	總長度 (mm) Overall	滾輪數 Roller Qty	載模力 (kgf) Die Load Capacity	油壓缸 (kg) Lift Cylinder	
				數量 (pcs)	舉模力 (kgf) Lift Force
DL50-400M	400	7	1200	4	4000
DL50-500M	500	9	1500		
DL50-600M	600	11	1800		
DL50-700M	700	13	2100		
DL50-800M	800	15	2400	6	6000
DL50-900M	900	17	2700		
DL50-1000M	1000	19	3000		
DL50-1100M	1100	21	3300	8	8000
DL50-1200M	1200	23	3600		
DL50-1300M	1300	25	3900		
DL50-1400M	1400	27	4500	8	8000
DL50-1500M	1500	29	4800		
DL50-1600M	1600	31	5100		
DL50-1700M	1700	33	5400		

液壓快速換模系統

Hydraulic quick mould change system

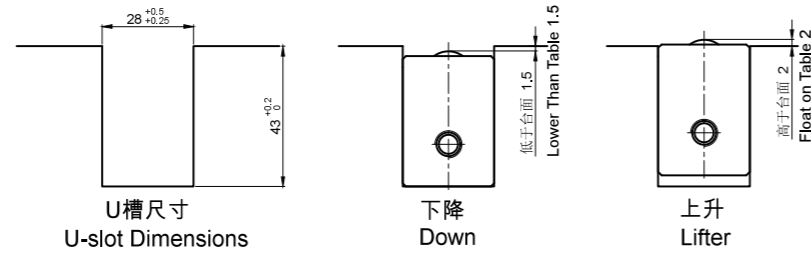
冲压篇 Q.M.D.S

快速換模系統-DB 油壓舉模器 (滾珠型)

RUIJIE QDCS-DB Die Lifter (Ball Type)

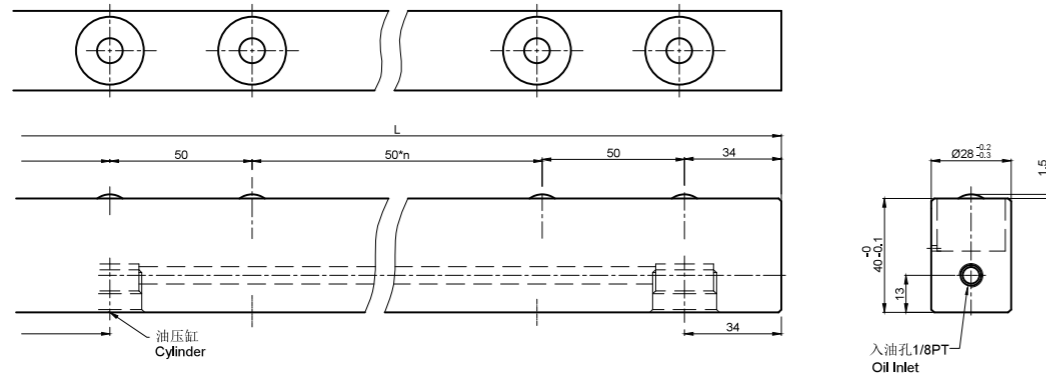
DB-28

選用標準：
兩條0.8噸以下模具
四條1.5噸以下模具



DB型油壓式舉模器，利用萬向滾珠的方式，適合前後左右移動模具時使用
The hydraulic DB Die Lifter employs universal bearings for superior forward and reverse, left and right motion of molds in adn out of press machines.

DB-28 適用於模具重量800kg以下
DB-28 for Dies 800kg or Less



產品規格

Specifications

Unit: mm

型號 Model	總長度 (mm) Overall	滾輪數 Roller Qty	載模力 (kgf) Die Load Capacity	油壓缸 (kg) Lift Cylinder	
				數量 (pcs)	舉模力 (kgf) Lift Force
DB28-400	400	7	320	2	1000
DB28-500	500	9	400	3	1500
DB28-600	600	11	480		
DB28-700	700	13	560		
DB28-800	800	15	640	4	2000
DB28-900	900	17	720		
DB28-1000	1000	19	800		
DB28-1100	1100	21	880	5	2500
DB28-1200	1200	23	960		
DB28-1300	1300	25	1040		
DB28-1400	1400	27	1120	6	3000
DL28-1500	1500	29	1200		
DL28-1600	1600	31	1280		
DL28-1700	1700	33	1360	7	3500

液壓快速換模系統

Hydraulic quick mould change system

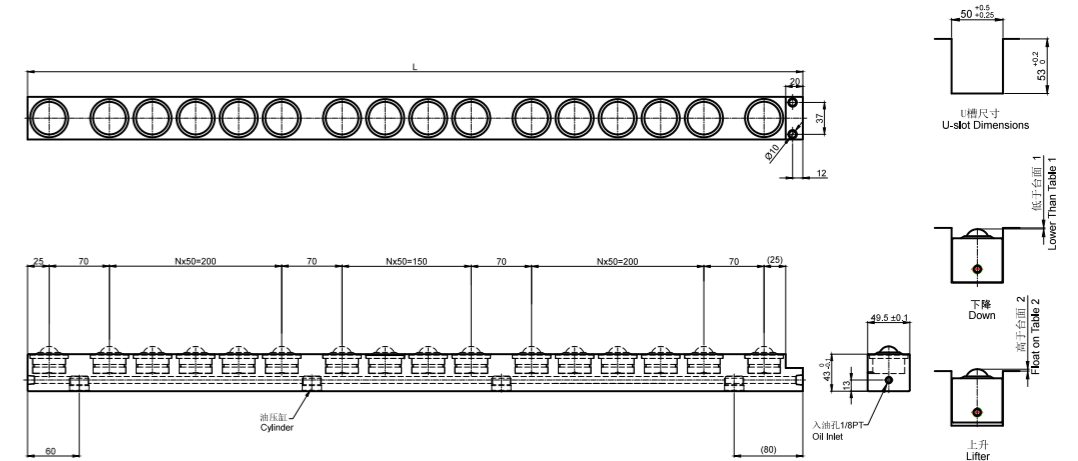
冲压篇 Q.M.D.S

快速換模系統-DB 油壓舉模器 (滾珠型)

RUIJIE QDCS-DB Die Lifter (Ball Type)

DB-50

選用標準：
兩條2噸以下模具
四條3噸以下模具



DB型油壓式舉模器，利用方向魔荻味的方式，適合前後左右移動模具時使用。
The hydraulic DB Die Lifter employs universal bearings for superior forward and reverse, left and right motion of molds in adn out of press machines.

產品規格

Specifications

Unit: mm

型號 Model	總長度 (mm) Overall	滾輪數 Roller Qty	載模力 (kgf) Die Load Capacity	油壓缸 (kg) Lift Cylinder	
				數量 (pcs)	舉模力 (kgf) Lift Force
DB50-400	400	6	480	3	1500
DB50-500	500	8	640	4	2000
DB50-600	600	10	800		
DB50-700	700	12	960		
DB50-800	800	14	1120	4	2000
DB50-900	900	16	1280		
DB50-1000	1000	18	1440		
DB50-1100	1100	19	1520	6	3000
DB50-1200	1200	21	1680		
DB50-1300	1300	23	1840		
DB50-1400	1400	24	1920	8	3000
DL50-1500	1500	26	2080		
DL50-1600	1600	28	2240		
DL50-1700	1700	30	2400	7	4000

液壓快速換模系統

Hydraulic quick mould change system

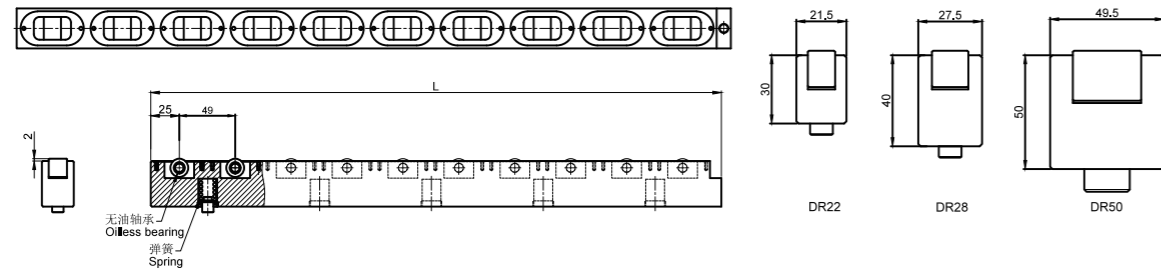
冲压篇 Q.M.D.S

快速換模系統-DU/DR 彈簧式舉模器

RUIJIE QDCS-DU/DR Die Lifter (Spring)

DR22/DR28/DR50系列

DR22系統選用標準：模具重量：200~300kg
 DR28系統選用標準：模具重量：400~800kg
 DR50系統選用標準：模具重量：500~1500kg



產品規格

Specifications

Unit: mm

型號 Model	總長度 (mm) Overall	滾輪數 Roller Qty	載模力 (kgf) Die Load Capacity	油壓缸 (kg) Lift Cylinder	
				數量 (pcs) Quantity	舉模力 (kgf) Lift Force
DR22-500	500	8	200	5	200
DR22-600	600	10	250	6	250
DR22-700	700	12	300	7	300
DR22-800	800	14	350	8	350
DR22-900	900	16	400	9	400
DR22-1000	1000	18	450	10	450
DR28-500	500	8	250	5	250
DR28-600	600	10	300	6	300
DR28-700	700	12	350	7	350
DR28-800	800	14	400	8	400
DR28-900	900	16	450	9	450
DR28-1000	1000	18	500	10	500
DR50-500	500	5	500	2	500
DR50-600	600	6	600	2	600
DR50-700	700	7	700	4	700
DR50-800	800	8	800	4	800
DR50-900	900	9	900	6	900
DR50-1000	1000	10	1000	6	1000

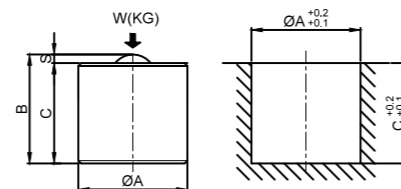
DU圓柱式舉模器

特性規格 Specifications

台面加工尺寸圖



	DU50	DU100	DU150
A	28	38	44
B	36	38	45
C	33	35	40
S	3	3	5
W	50kgf	150kgf	150kgf



液壓快速換模系統

Hydraulic quick mould change system

冲压篇 Q.M.D.S

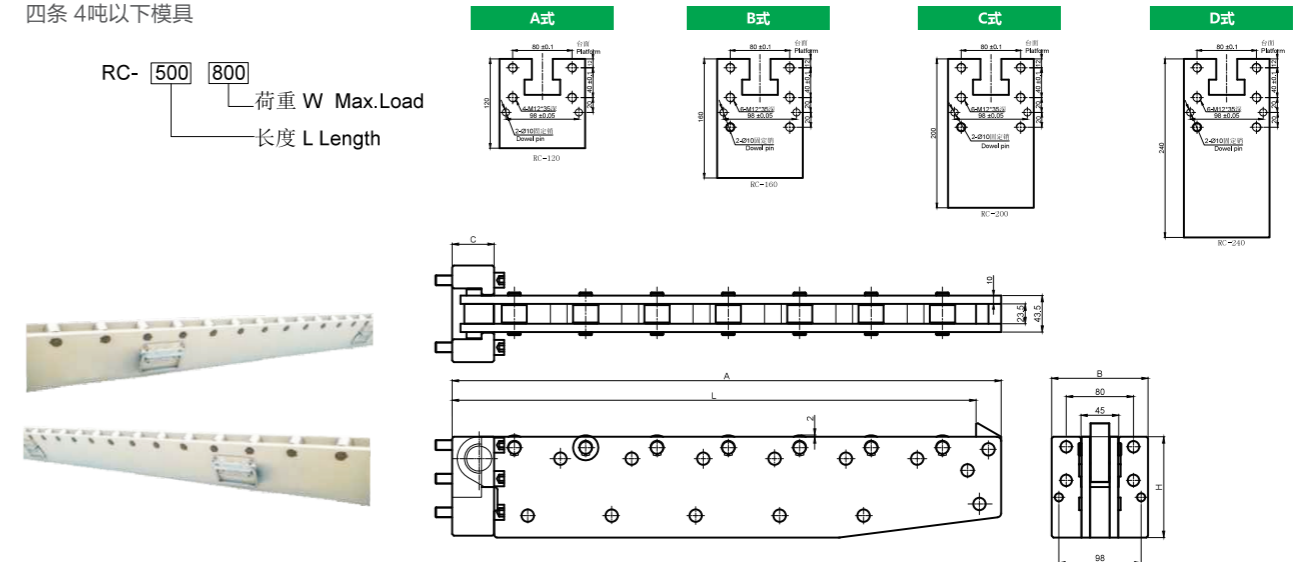
快速換模系統-RC型移模臂 (輕負荷)

RUIJIE QDCS-RC Blolster Extension Series (Light Duty)

RC Series

選用標準：(請注意固定座高度)
 兩條 2噸以下模具
 四條 4噸以下模具

固定座尺寸及台面打孔尺寸 Mounting Hole Dimensions



產品規格

Specifications

型號 Model	模具引出長 (L) Die Travel	最大荷重(kg) Max.Load	全長 (A) Overall Length	固定座 Fixture			個支 Rollers	固定座形式 Fixture Mode	
				H	B	C			
RC500-800	500	800	550	120	115	50	6	RC-120	
RC500-1250	500	1250	550	160				RC-160	
RC500-1600	500	1600	550	200				RC-200	
RC700-600	700	600	750	120			8	RC-120	
RC700-1000	700	1000	850	160				RC-160	
RC800-800	800	800	850	160				9	RC-200
RC800-1600	800	1600	850	200			RC-240		
RC800-2000	800	2000	850	240			10		RC-200
RC900-900	900	900	950	200				12	RC-200
RC1000-1600	1000	1600	1050						

液壓快速換模系統

Hydraulic quick mould change system

冲压篇 Q.M.D.S

快速換模系統-RCI型移模臂 (中負荷)

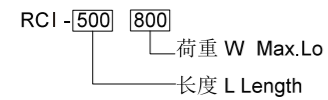
RUIJIE QDCS-RCI Bolster Extension Series (Medium Duty)

RCI Series

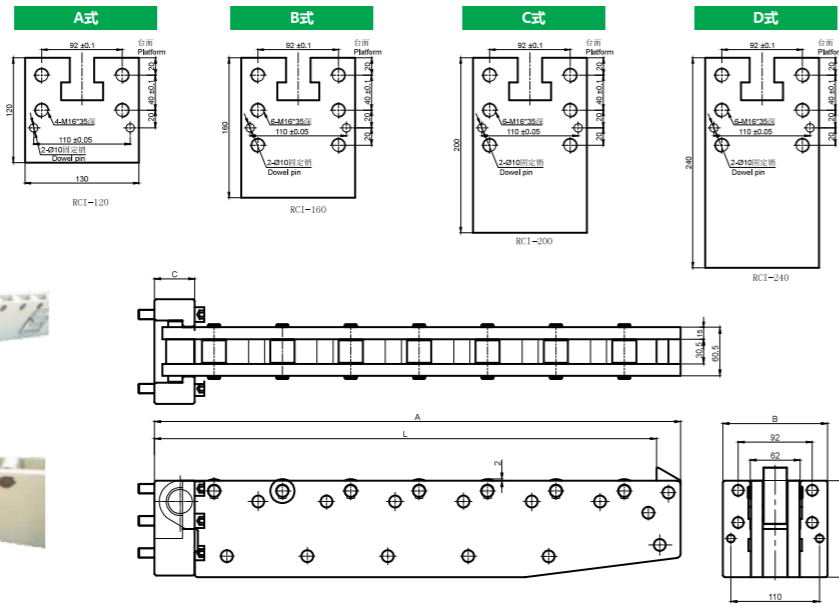
選用標準：(請注意固定座高度)

兩條 3噸以下模具

四條 5噸以下模具



固定座尺寸及台面打孔尺寸 Mounting Hole Dimensions



產品規格

Specifications

型號 Model	模具引出長 (L) Die Travel	最大荷重(kg) Max.Load	全長 (A) Overall Length	固定座 Fixture			個/支 Rollers	固定座形式 Fixture Mode	
				H	B	C			
RCI500-1000	500	1000	550	120	130	60	6	RCI-120	
RCI500-1500	500	1500	550	160				RCI-160	
RCI500-2000	500	2000	550	200				RCI-200	
RCI700-800	700	800	750	120			8	RCI-120	
RCI700-1200	700	1200	850	160				RCI-160	
RCI800-1000	800	1000	850	1600			9	RCI-200	
RCI800-2000	800	2000	850	200				RCI-240	
RCI800-2500	800	2500	850	240				10	RCI-200
RCI900-1100	900	1100	950	200					RCI-200
RCI1000-2000	1000	2000	1050					12	

液壓快速換模系統

Hydraulic quick mould change system

冲压篇 Q.M.D.S

快速換模系統-RC-RCI型移模臂 (帶支撐)

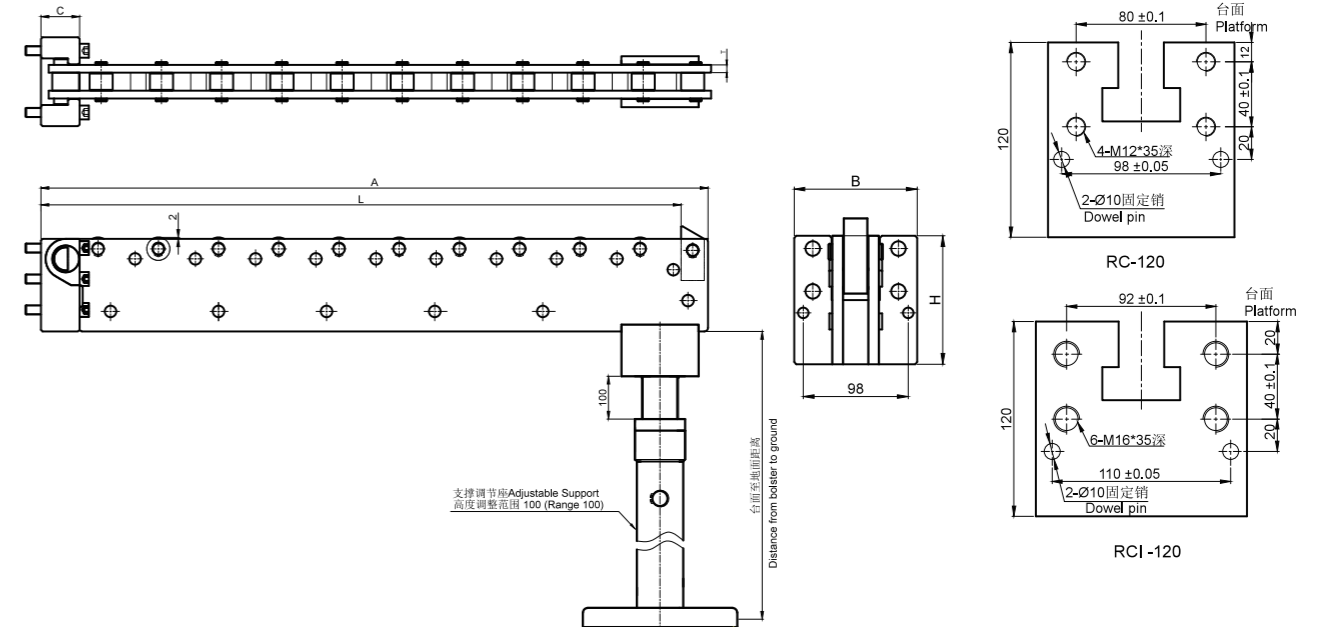
RUIJIE QDCS-RC-RCI Bolster Extension Series (with support)

RC型 RC Series

選用標準：(模具寬度大於1m時)

四條 5噸以下模具選用RC

四條 5噸以上8噸以下模具選用RCI



產品規格

Specifications

型號 Model	模具引出長 (L) Die Travel	最大荷重(kg) Max.Load	全長 (A) Overall Length	固定座 Fixture			個/支 Rollers	固定座形式 Fixture Mode				
				H/高度	B/寬度	C/厚度 T/厚度						
RC1100-2000	1100	2000	1150	120	115	50	10	RC-120				
RC1200-2000	1200	2000	1250						14			
RC1300-2000	1300	2000	1350						15			
RC1400-2000	1400	2000	1450						16			
RC1500-2000	1500	2000	1550						17			
RC1600-2000	1600	2000	1650						19			
RC1700-2500	1700	2000	1750						20			
RC1100-3000	1100	3000	1150						21			
RCI1200-3000	1200	3000	1250						130	55	15	RCI-120
RCI1300-3000	1300	3000	1350									
RCI1400-3000	1400	3000	1450	15								
RCI1500-3000	1500	3000	1550	16								
RCI1600-3000	1600	3000	1650	17								
RCI1700-3000	1700	3000	1750	19								

液壓快速換模系統

Hydraulic quick mould change system

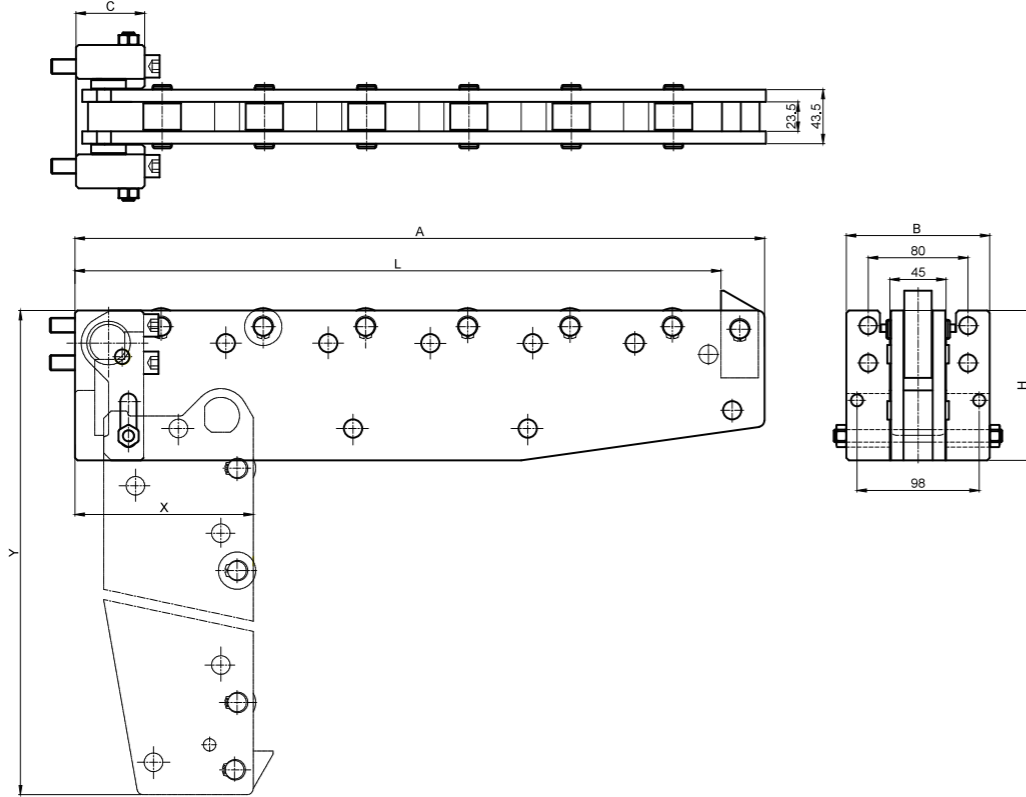
冲压篇 Q.M.D.S

快速換模系統—RD型移模臂

RUIJIE QDCS-RD Blolster Extension Series (with support)

RD型(拆下式) Drop-Down RD Series

选用标准:
两条 2吨以下模具



产品规格

Specifications

型号 Model	模具引出长(L) Die Travel	最大荷重(kg) Max. Load	全长(A) Overall Length	固定座 Fixture			个/支 Rollers	安装尺寸 Installed Dimension	拆下时尺寸 Drop Down	
				H	B	C			X	Y
RD500-800	500	800	550	120	115	55	6	同RC固定座	140	620
RD500-1250	500	1250	550	160					180	660
RD500-1600	500	1600	550	200					220	700
RD700-600	700	600	750	120					140	820
RD700-1000	700	1000	750	160					180	860
RD800-800	800	800	850	1600					180	960
RD800-1600	800	1600	850	200					220	1000
RD800-2000	800	2000	850	240					260	1040
RD900-900	900	900	950	200					220	1100
RD1000-1600	1000	1600	1050						220	1200

液壓快速換模系統

Hydraulic quick mould change system

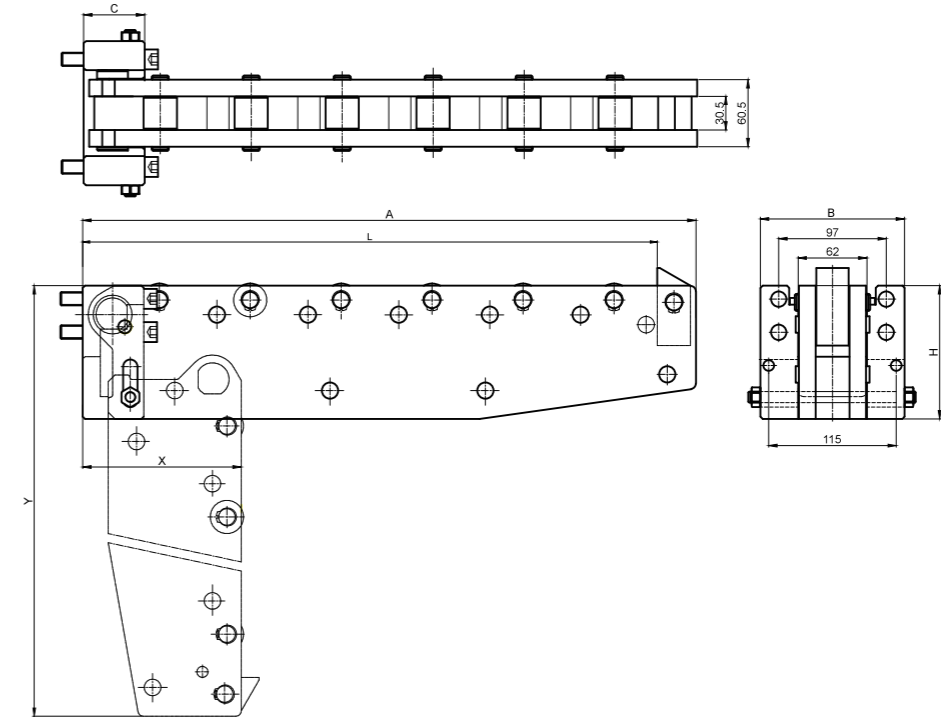
冲压篇 Q.M.D.S

快速換模系統—RDI型移模臂

RUIJIE QDCS-RDI Blolster Extension Series

RDI型(拆下式) Drop-Down RD Series

选用标准:
两条使用 3吨以下模具



产品规格

Specifications

型号 Model	模具引出长(L) Die Travel	最大荷重(kg) Max. Load	全长(A) Overall Length	固定座 Fixture			个/支 Rollers	安装尺寸 Installed Dimension	拆下时尺寸 Drop Down	
				H	B	C			X	Y
RDI500-1000	500	1000	550	120	130	60	6	同RCI固定座	140	620
RDI500-1500	500	1500	550	160					180	660
RDI500-2000	500	2000	550	200					220	700
RDI700-1000	700	1000	750	120					140	820
RDI700-1200	700	1200	750	160					180	860
RDI800-1000	800	1000	850	160					180	960
RDI800-2000	800	2000	850	200					220	1000
RDI800-2500	800	2500	850	240					260	1040
RDI900-1000	900	1000	950	200					220	1100
RDI1000-2000	1000	2000	1050						220	1200

液壓快速換模系統

Hydraulic quick mould change system

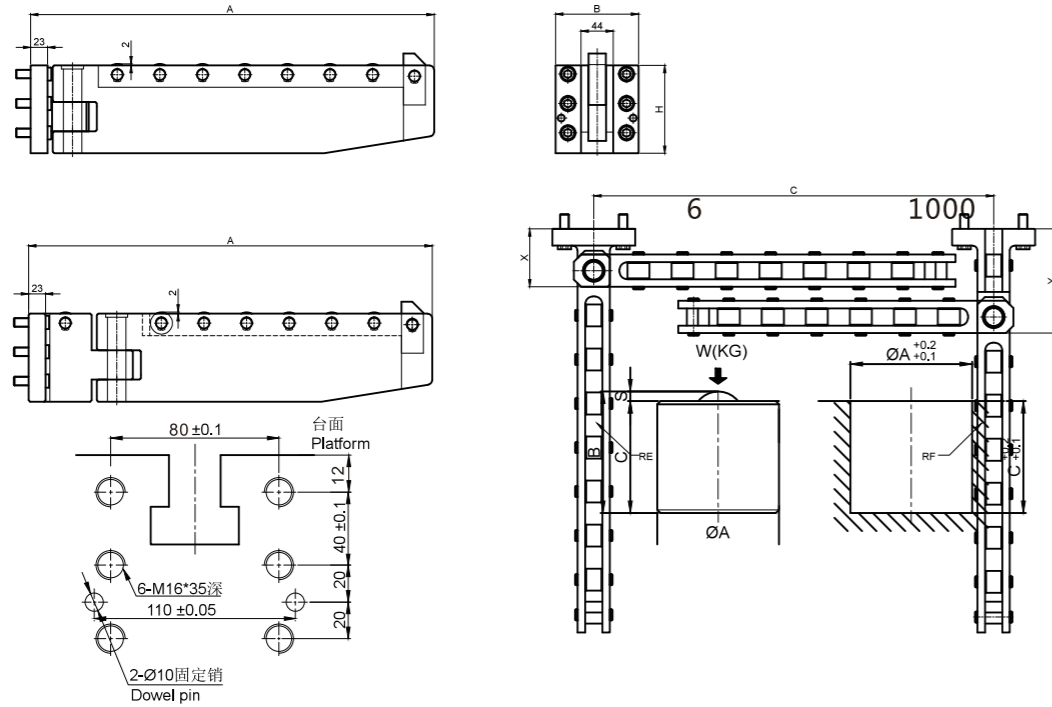
冲压篇 Q.M.D.S

快速換模系統-REF型移模臂

RUIJIE QDCS-REF Bolster Extension Series

REF型(旋轉式) Folding RE/RF Series

選用標準：
兩條使用 2 噸以下模具



產品規格

Specifications

型號 Model	全長 (A) Overall Length	最大荷重(kg) Max.Load	固定座 Fixture			寬度 Width	安裝尺寸 Installed Dimension	拆下時尺寸 Drop Down	
			H	B	C			X	Y
REF500-800	500	800	120	115	500	44	如圖所示	80	140
REF500-1250	500	1250	160		500				
REF700-600	700	600	120		700				
REF700-1600	700	1600	200		700				
REF800-800	800	800	160		800				
REF800-1600	800	1600	200		800				
RDI500-1600	500	1600			500				
RDI900-900	900	900			900				

液壓快速換模系統

Hydraulic quick mould change system

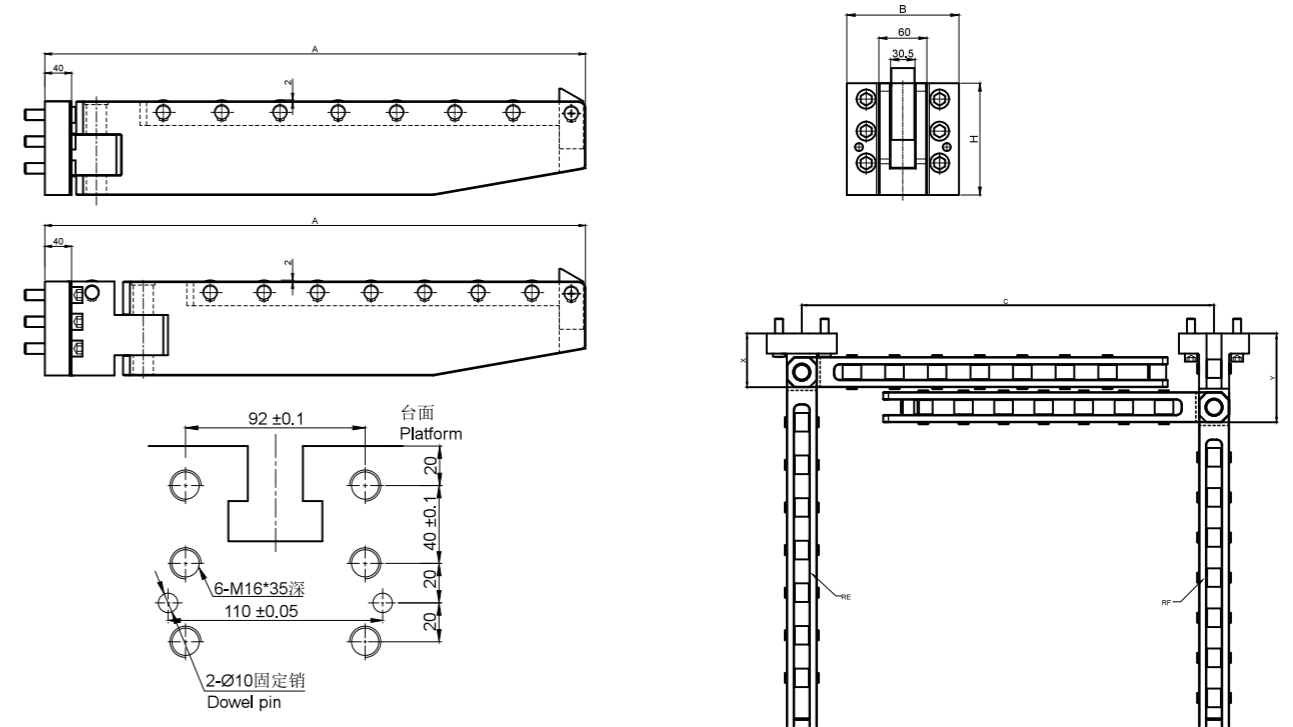
冲压篇 Q.M.D.S

快速換模系統-REFI型移模臂

RUIJIE QDCS-REFI Bolster Extension Series

REF型(旋轉式) Folding RE/RF Series

選用標準：
兩條使用 3 噸以下模具



產品規格

Specifications

型號 Model	全長 (A) Overall Length	最大荷重(kg) Max.Load	固定座 Fixture			寬度 Width	安裝尺寸 Installed Dimension	拆下時尺寸 Drop Down	
			H	B	C			X	Y
REFI500-1000	500	1000	120	140	500	60	如圖所示	110	180
REFI1500-1500	500	1500	160		500				
REFI700-800	700	800	120		700				
REFI700-2000	700	2000	200		700				
REFI800-1000	800	1000	160		800				
REFI800-2000	800	2000	200		800				
REFI500-2000	500	2000			500				
REFI900-1100	900	1100			900				

液壓快速換模系統

Hydraulic quick mould change system

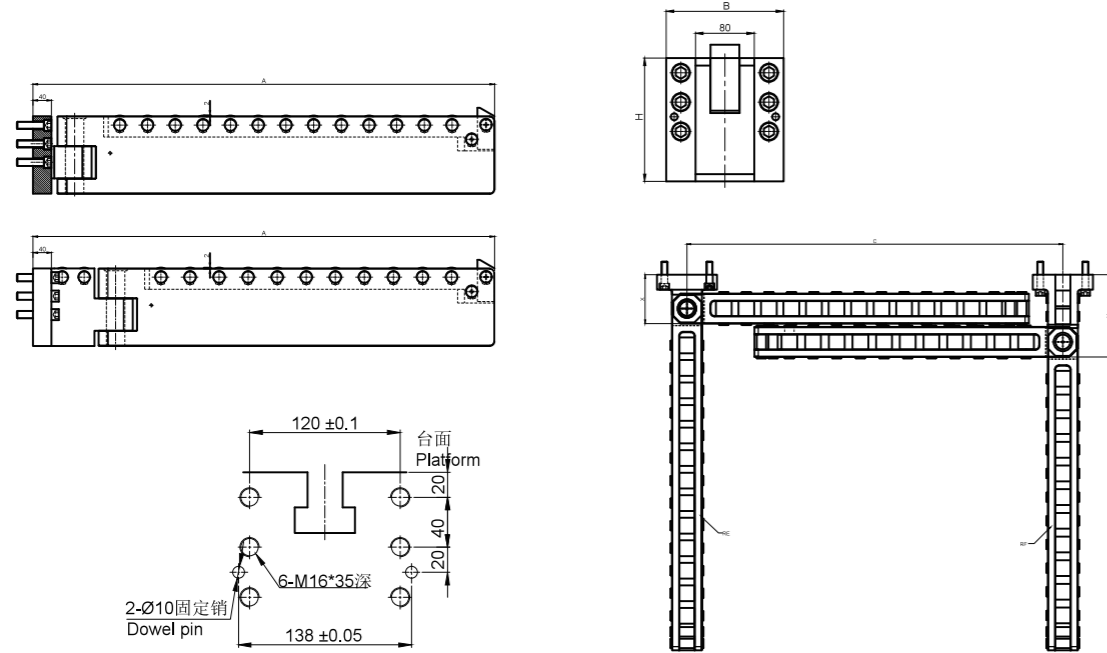
冲压篇 Q.M.D.S

快速換模系統-REFII型移模臂

RUIJIE QDCS-REFII Bolster Extension Series

REF型(旋轉式) Folding RE/RF Series

選用標準：
3噸以下模具不帶支撐
3噸以上5噸以下模具帶支撐



產品規格

Specifications

型號 Model	全長 (A) Overall Length	最大荷重(kg) Max.Load	固定座 Fixture			寬度 Width	安裝尺寸 Installed Dimension	拆下時尺寸 Drop Down	
			H	B	C			X	Y
REFII1000-2000	1000	2000	160~200	160	1000	80	如圖所示	130	220
REFII1100-2500	1100	2500			1100				
REFII1200-4000	1200	4000			1200				
REFII1300-4000	1300	4000			1300				
REFII1400-4000	1400	4000			1400				
REFII1500-4000	1500	4000			1500				
REFII1600-4000	1600	4000			1600				

液壓快速換模系統

Hydraulic quick mould change system

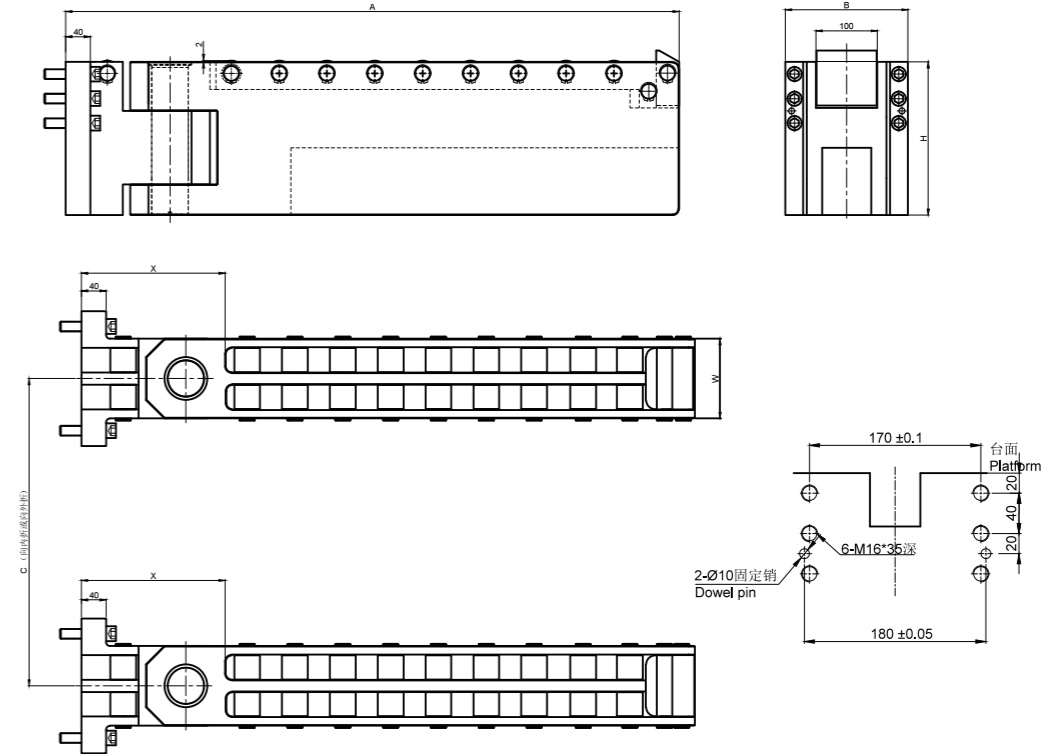
冲压篇 Q.M.D.S

快速換模系統-REFIII型移模臂

RUIJIE QDCS-REFII Bolster Extension Series

REF型(旋轉式) Folding RE/RF Series

選用標準：
兩條使用5-10噸模具使用



產品規格

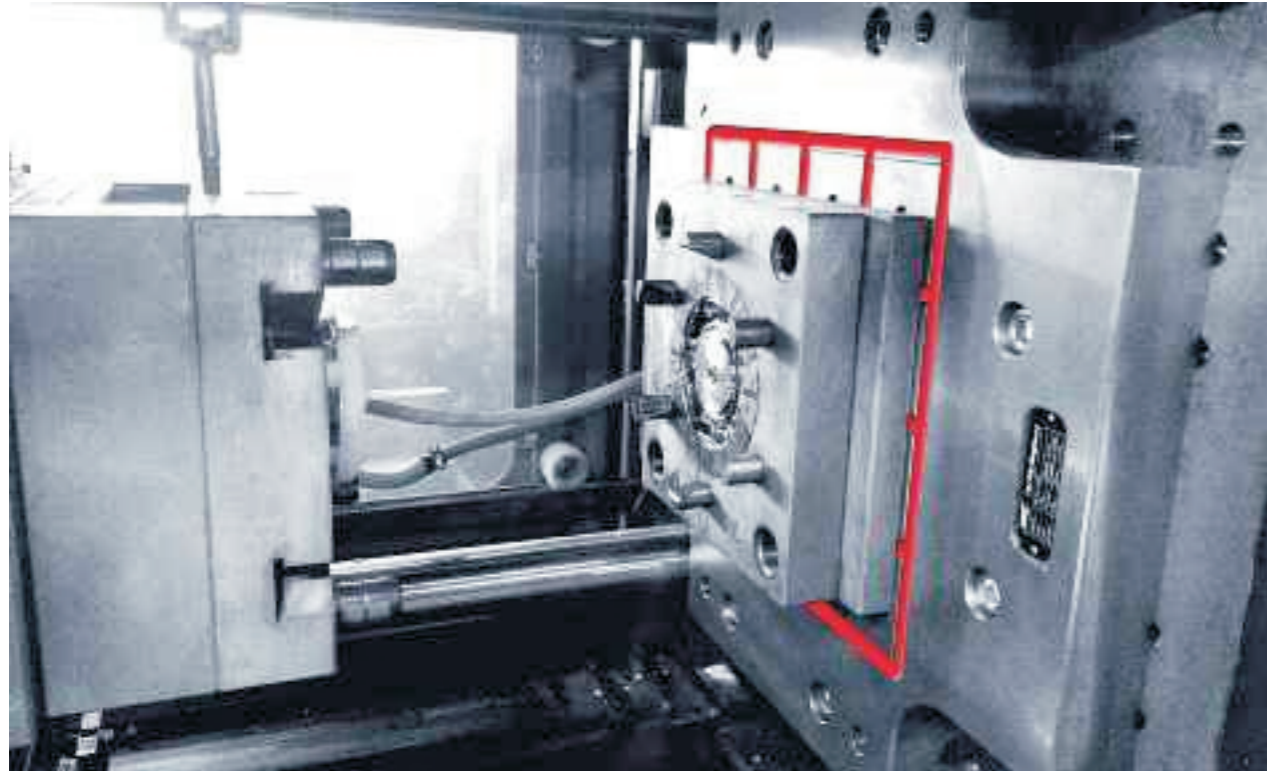
Specifications

型號 Model	全長 (A) Overall Length	最大荷重(kg) Max.Load	固定座 Fixture			寬度 Width	安裝尺寸 Installed Dimension	拆下時尺寸 Drop Down	
			H	B	C			X	
REFIII1000-4000	1000	4000	180~240	200	1000	130	如圖所示	235	
REFIII1100-4000	1100	4000			1100				
REFIII1200-4000	1200	4000			1200				
REFIII1300-4000	1300	4000			1300				
REFIII1400-4000	1400	4000			1400				
REFIII1500-4000	1500	4000			1500				
REFIII1600-4000	1600	4000			1600				

▼ 電控永磁快速換模系統

Electronically controlled permanent magnet quick mould change system

磁板 The permanent-electro magnetic



高效

顛覆傳統換模方式，節約90%安裝、拆卸模具時間，適應小批量、多批次的生產
大幅提高生產效率，提升企業競爭力

Efficient

Comparing with the traditional way of mold change, it can save the time in mold installation and disassembly by 90%, Suitable for the small-lot and multiple-batch production, it can greatly enhance the production efficiency and promote the enterprise competitiveness.

沒有額外的成本

您的初次投入就是唯一的投資，不需要對QMC快速換模系統進行傳統保養
工作中不消耗電能，沒有生產損失

Convenient and Fast

Your initial investment is the only investment needed, The traditional maintenance for the QMC system is not needed, No electric energy is consumed during its operation, No production loss is caused.

▼ 電控永磁快速換模系統

Electronically controlled permanent magnet quick mould change system

磁板 The permanent-electro magnetic

安全

只有通過QMC快速換模系統全部的安全檢測後，注塑機才能工作磁板在充磁狀態下發生停電或斷線的情況也不會脫磁，使用安全

Safe

The injection molding machine will not work until it has passed the all safety check by the QMC system. The magnetic platen will not demagnetize under the magnetizing state when there is a power failure or disconnection, thus achieving a safe use.

便捷

一個普通的模具安裝工，不需費特殊技能，就可以站在注塑機外面輕鬆的更換模具
模具更換和安裝的時間降到原來的1/10

Convenient and Fast

The mold can be replaced easily by a common mold installer standing outside the injection molding machine, during which no special skills are needed, The time for mold replacement and installation has been reduced to 1/10 of the original time needed

免維護

磁力模板無運動部件，意味著無磨損，只需擦拭清潔磁板表面即可
在吸住或放开模具時需要電1-4秒鐘，平時工作中無需用電，對電氣部件損耗小，屬於免維護產品

Maintenance-free

There are no moving parts in the magnetic platen, which means that no wear or abrasion will be caused. It is only necessary to wipe the surface of the magnetic platen. It will take one to four seconds to hold or release the mold. Due to the reason that no electricity is needed in the operation, the damage to the electrical parts is small. Thus it is the maintenance-free product.

柔性、提高能力

注塑機模板上沒有了傳統夾具的約束，從而提高了注塑機的容模量，可以安裝更大、更複雜的模具

Flexibility and Improvement of Capability

The absence of traditional clamp on the platen of the injection molding machine has improved the mold width and length, which means that it can install larger and more complex molds.

▼ 电控永磁快速换模系统

Electronically controlled permanent magnet quick mould change system

磁板 The permanent-electro magnetic

○ 磁板结构

Structure of Magnetic Platen

每QMC快速换模系统都是“艺术品”/Each set of QMC system is “work of art”

定位环

用于快速定位模具

Locating Ring

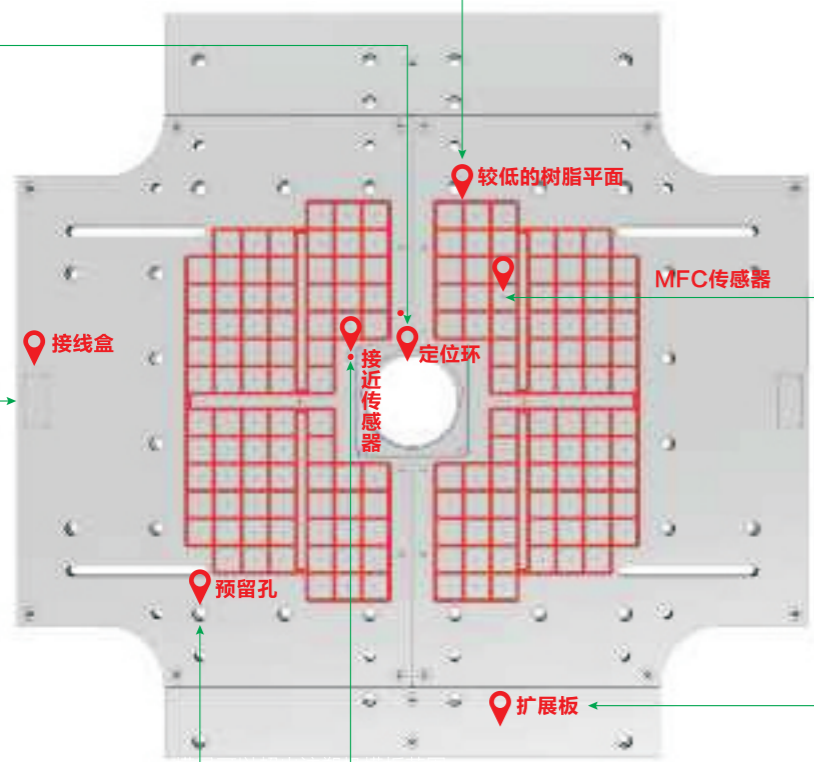
It is used to rapidly locate the mold.

较低的树脂平面

具有耐高温和高阻抗性能的环氧树脂密封，高度比磁极略低一些，有利于散热。

Lower Resin Plane

It has a heat-resisting and high-impedance epoxy seal which is slightly lower than the magnetic pole, thus facilitating the heat dissipation.



MFC传感器

通过部分特殊设计的磁极来检测充磁后的磁饱和和强度。

MFC Sensor

It is used to detect the magnetic flu intensity after the magnetizing with the specially designed magnetic p

扩展板

矩形的钢板增加磁板和模具的接触面积可预留滚轮加工孔

Expansion Board

The rectangular steel platen has increased the contact area between the magnetic platen and the mold, and the holes for roller processing can be reserved.

预留孔

用于安装磁力模板的固定孔和动模侧的模具顶出孔

Reserved Holes

It is the fixing hole for installing the magnetic platen, and also the ejection hole at the movable mold.

接线盒

加工到磁力模板的内部，具有防水和高阻抗的特性

Junction Box

Featuring the water tightness and high impedance, it is built within the magnetic platen.

接近传感器

用于检测模具背板与磁力模板之间的间隙，当模具位移超过0.2mm时立即机报警，确保人员、设备、模具的安全。

Proximity Sensor

It is used to detect the gap between the backboard of the mold and the magnetic platen. The machine will shut shown to make an alar when the displacement distance of the mold has exceeds 0.2mm, ensure the safety of workers, equipment and molds.

▼ 电控永磁快速换模系统

Electronically controlled permanent magnet quick mould change system

磁板 The permanent-electro magnetic

○ 对比传统夹紧力

Comparing with the traditional clamp force

对比传统夹紧力

传统的机械或液压夹具只是作用在模具背板周边几个点的接触，不可避免产生受力偏差，尤其是在大模具上。

Comparing with the traditional clamp force

The traditional machine or hydraulic clamp only acts on the several points of the back platen of the mold, inevitably causing stress deviation, especially in large molds.

磁力模板方案

上海塔池的电控永磁QMC快速换模系统，由于夹紧力均匀的分布在模具的接触表面，模具不会受到任何重压而变形。模具—磁力模板—注塑机模板完美的结合，从而提高产品的质量和重复度。

Magnetic Platen Application

The QMC system of Tai Chi Magforce(Shanghai) Machinery Co., Ltd has enabled the clamp force to evenly distribute on the contact surface of the mold, thus the mold will not deform due to heavy load. The perfect combination between the mold, magnetic platen and injection molding machine's platen has improved the product quality and the repealeable accuracy.

○ 工作原理

Working Principle

内部结构

磁板由“田”字型布局的南极(S)、北极(N)交互的磁极构成，只需极短时间的脉，冲电流就可以改变磁体的磁力方向，从而转换磁力模板充磁或退磁的状态。

Interior Structure

The magnetic platen is made up the South Pole (S)and North Pole(N) which cross in the shape of “田”. It takes the pulse current a very short time to change the direction of the magnetic material s polarity, thus changing the magnetizing or demagnetizing state of the magnetic platen.

充磁状态

使磁力模板发出20mm穿透深度的外循环磁力线，将模具安全的固定，同时不影响模具内的部件。工作中不需要持续的电能，也不产生热量。

Magnetizing State

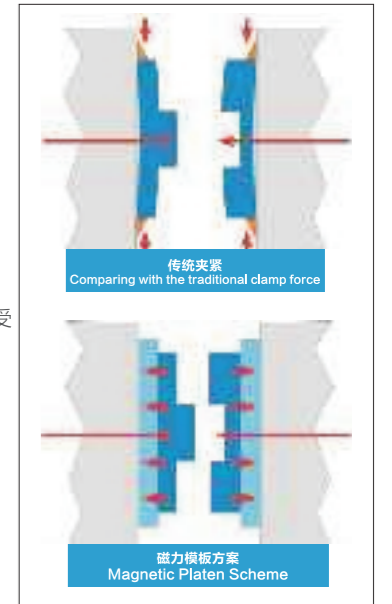
Under the magnetizing state, the magnetic platen can send forth the externally circulated magnetic flux which has just 20mm of depth of penetration to fix the mold and not affect the parts within the mold. During the working phase, the system neihner needs continuous power supply, nor generales heat.

退磁状态

通过电流脉冲将磁力线从外循环状态的转换为内循环状态，轻松的将模具松开。

Demagnetizing State

Under this state, the magnetic flux is switched from the external circulation state to the internal circulation state by the current pulse, thus the magnetic platen release the mold to be load off.



▼ 電控永磁快速換模系統

Electronically controlled permanent magnet quick mould change system

磁板 The permanent-electro magnetic

○ 快速換模系統演示

Demonstration of Quick Mold Change System

磁力模板快速換模步驟

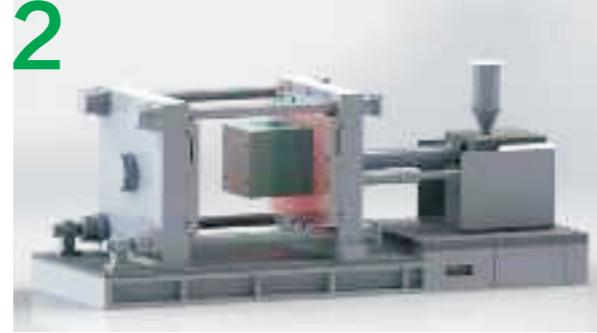
简单 快速 安全 高效
模具更换和安装的时间降到原来的1/10

Steps of Quick Mold Change by Magnetic Platen

Simple, Fast, Safe and Efficient
The time for mold replacement and installation has been reduced to 1/10 of the original time needed.



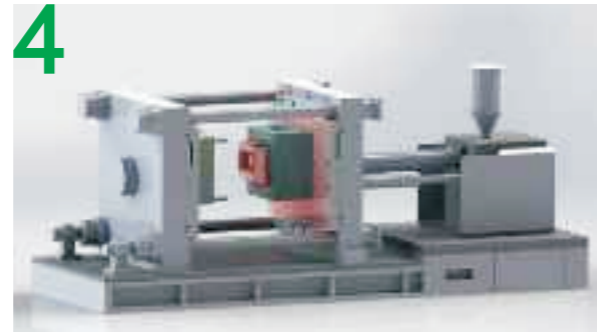
1 注塑机开模，吊入模具
The injection molding machine opens the clamp platen, and lifts the mold into the machine.



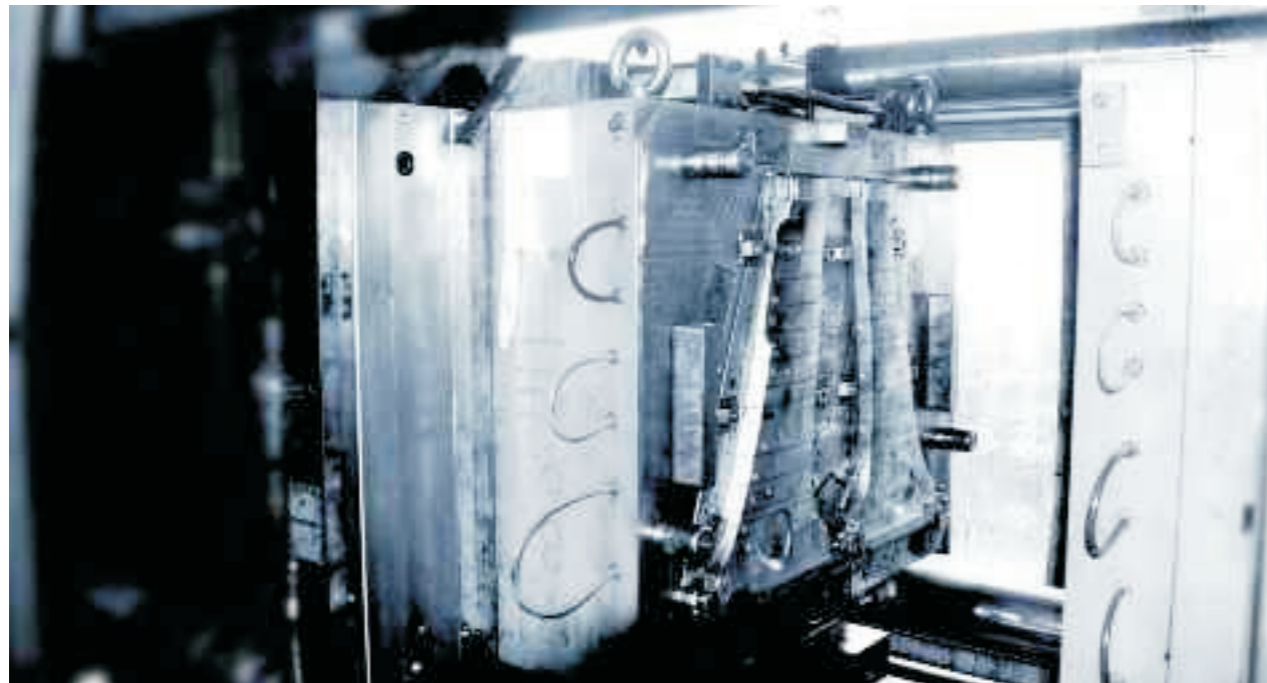
2 在定模侧通过定位环将模具定位
Locate the mold with the locating ring at the fixed mold.



3 注塑机合模，并高压锁模，转动安全钥匙的同时按下定模、动模充磁按钮
The injection molding machine closes the mold, and clamps the mold with high pressure, and presses the fixed mold magnetizing button and movable mold magnetizing button while turning the security key.



4 注塑机开模，准备开始生产
The injection molding machine opens the mold, and is ready for production.



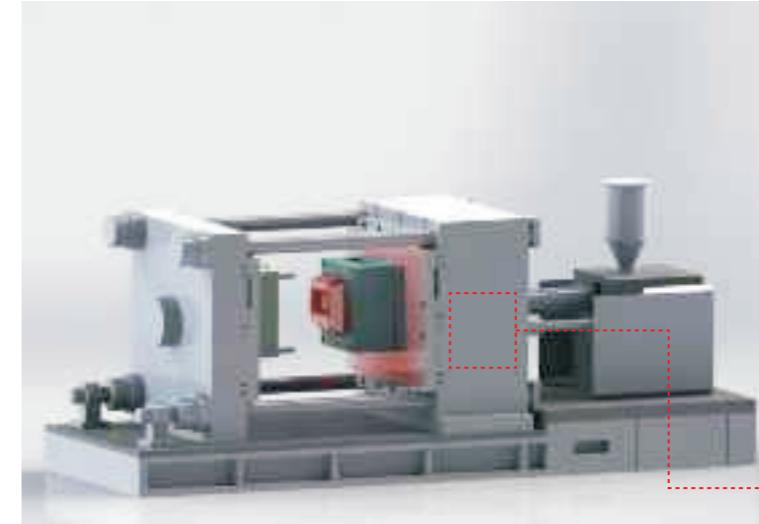
▼ 電控永磁快速換模系統

Electronically controlled permanent magnet quick mould change system

磁板 The permanent-electro magnetic

○ 控制器

Controller



别具匠心的操作界面、便捷 安全
The originally-designed operation interface makes the operation convenient and safe.

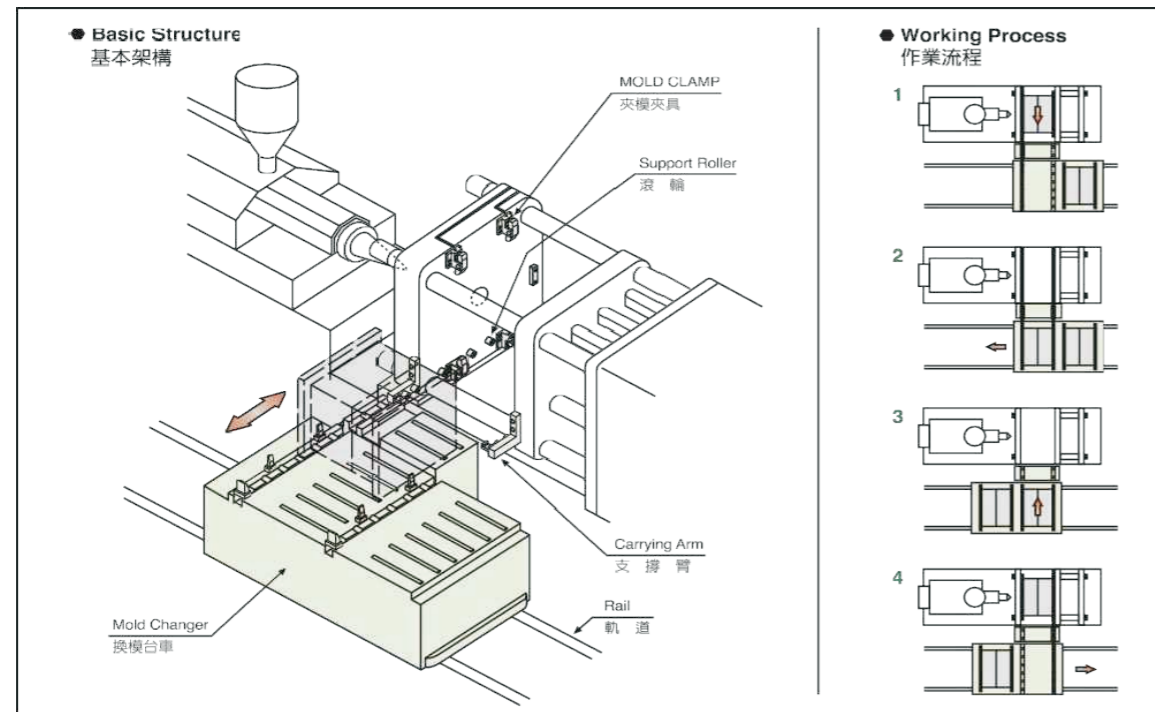


动模 M		TZO		定模 F	
动模充磁		模具编号: MSD31-K23	定模充磁		
PS	MFC	ECS	PS	MFC	ECS
实际温度 31.5 °C		描述: 0	实际温度 71.6 °C		
最大温度 120 °C		充磁时间	最大温度 120 °C		
		2017-06-20 15:22:37			
实际吸附力 114.6 T		当前时间	实际吸附力 134.5 T		
最大吸附力 152.8 T		2017-06-22 11:02:58	最大吸附力 135.3 T		
			报警		吸附力报警 返回

换模台车

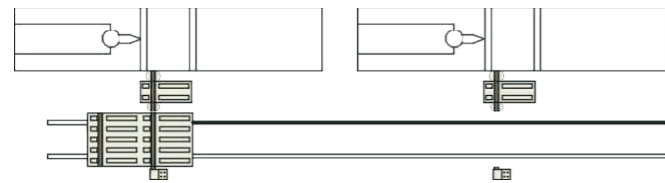
Mould Change trolley

换模装置 Changing Die Device



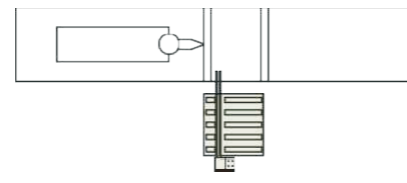
多机直列(钩模座固定)

Multi-machines in one line (fixed hook set)



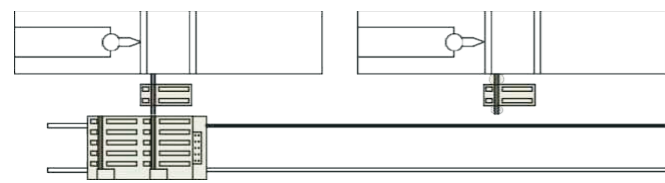
单机单模

Single machine and mold



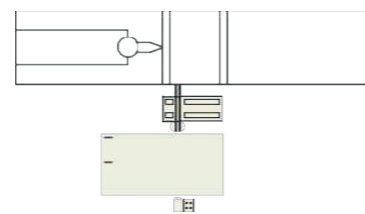
多机直列(钩模座移动)

Multi-machines in one line (movable hook set)



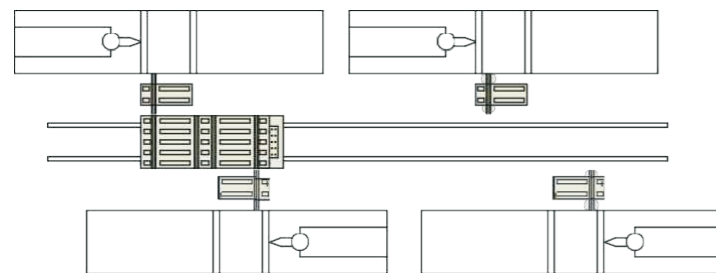
单机双模

Single machine and twin mold



多机器并列

Multi-machines juxtaposed



装机前客户需完成以下事项

1. 轨道埋设工程
2. 模具底板规格化
3. 模具定位槽、拉模座孔位、范本倒角加工

Customers are required to finish the following things before Mold Changer System installation.

1. Rail construction.
2. Standardize the mold template.
3. Process the mold positioning slot, the hole

客户案例

Customer case

