

YH2016.0920.1



官方微信公众号


[www.yanhing.com](http://www.yanhing.com)

仁興機器廠有限公司  
Yan Hing Engineering Works Ltd.

地址: 香港九龍觀塘開源道62號駱駝漆大廈第2座5字樓A&B室  
Add: Flat A & B, 5/F., Block 2, Camelpaint Buildings, 62 Hoi Yuen Road, Kwun Tong, Kowloon, Hong Kong.  
電話(Tel): 852-23891338 傳真(Fax): 852-27978661 郵箱(E-mail): info@yanhing.com

仁興機械(佛山)有限公司  
Yan Hing Machinery(Foshan)Co., Ltd.

地址: 廣東省佛山市高明區楊和鎮高明大道中人景路13號  
Add: 13 Renjing Rd., Yanghe Town, Gaoming District, Foshan City, P.R. China.  
電話(Tel): 0757-8880 3372 傳真(Fax): 0757-8880 3329

 **400-0092-082**



# JS 高級注塑成型機系列

UPGRADED PLASTIC INJECTION MOULDING MACHINE SERIES



*JS 是您的壯健好伙伴*  
*JS is your strong partner for manufacturing*



JS1300 ( 图片只供参考 )



# JS 高級注塑成型機系列

UPGRADED PLASTIC INJECTION MOULDING MACHINE SERIES

大容模、低耗電、高剛性、高效能  
鎖模力300-2000t

Large Mould Accomodation, Low Energy Consumption,  
High Rigidity, High Efficiency,  
Clamping Force 300-2000 ton

## 鎖模部分 Clamping Unit

實現快速、高效能、高精度、高系統剛性。  
High Speed, High Efficiency,  
High Precision, High Rigidity

## 注射部分 Injection Unit

實現高塑化質量和效率、高響應動作。  
High Plasticizing Quality and  
Efficiency, Fast Reaction Time

## 控制系統 Control Unit

符合國家標準GB22530安全要求。油路設置旁路過濾裝置。  
Fully Complies to National  
Safety Standard GB22530

## 液控系統 Hydraulic System

滿足歐洲CE標準，控制可靠，精度高，響應快。  
Complies to CE standard,  
High Precision, Fast  
Reaction

機鉸優化設計，優化速度曲線，實現快速開合模。  
鎖模機鉸部分，所有鉸接部位設計有高强度合金鋼套，有效保證運動精度和提高使用壽命。

Enhanced toggle design to achieve optimal mould open and close speed.

High strength steel bushings are used in the toggle system to achieve high precision and prolong machine life.

差動鎖模油路設計，提高開合模速度，減少開合模時間。

The differential hydraulic circuit design to increase mould open and close speed and therefore shorten cycle time.

模板採用箱型結構，應用有限元受力分析設計，加上高拉力合金鋼粗壯哥林柱，提供鎖模系統足夠剛性。

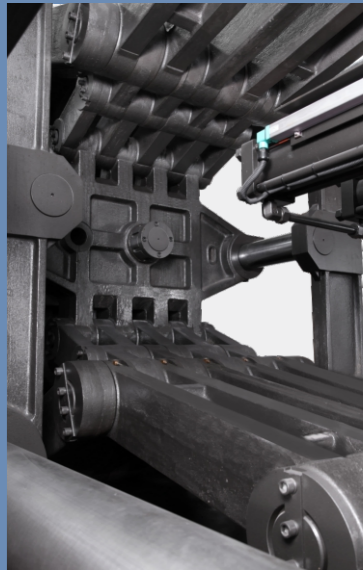
The box-shaped design of mould platens and the high tensile tie bars allow high rigidity clamping performance.

開合模行程大、熔模量大。

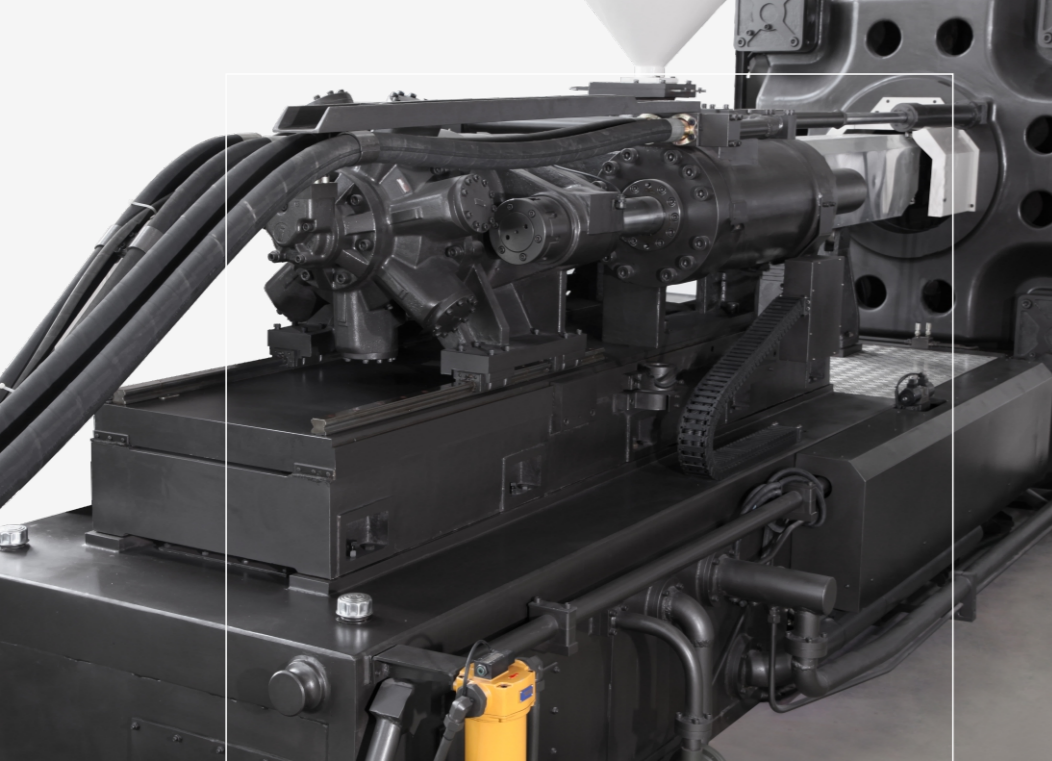
Large mould height accommodation and space between tie bars



JS 是您的壯健好伙伴  
JS is Your Strong Partner for manufacturing

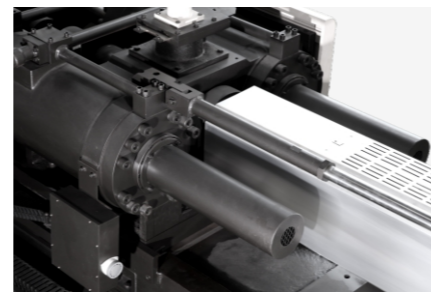






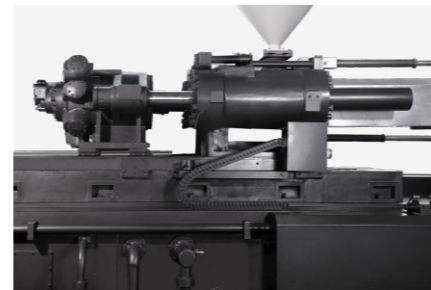
兩組移臺油缸對稱配置，有效防止射咀漏膠。

Double hydraulic carriage cylinders ensure secured contact between nozzle and mould and prevent nozzle leakage.



特式分流設計及數碼螺桿背壓調校，使混色均勻及達到最佳熔膠效果。

Special design of screw check valve and digital screw back-pressure control allow the best plasticizing result in both mixing and melting.



數控熔膠背壓配置，提高塑化質量和效率，適應不同塑料生產。

Digitized plasticizing back pressure control to increase plasticizing quality and efficiency.



射臺滑座機構是 T 型槽壹體化設計，令滑行更穩定。

The design of T-shape slide-way for movement of injection unit results in highly stable operation.



- ① P-3系統微電腦由歐洲品牌原廠製造，除備有500套模具數據記憶及顯示操作參數外，還有錯誤操作提示功能。
- ② 可從電腦直接輸入壓力、速度、位置、時間及熔膠筒溫度數據。
- ③ 採用高精度電子尺準確測量模板、螺桿及頂針位置。
- ④ 採用PID溫度控制器配合半導體繼電器，可準確控制溫度及減少接觸點損耗，從而延長工作壽命。
- ⑤ 符合歐洲CE標準及中國安全標準GB22530
- ⑥ 注塑參數及模具資料可儲存於電腦或透過USB儲存於記憶卡內。

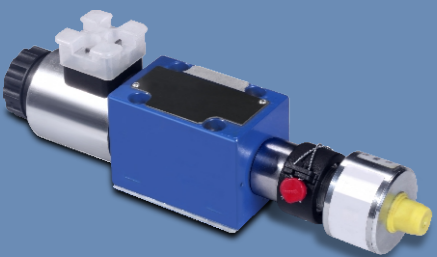
- ① European-made and specially designed computerized controller Plastronic-3, P-3, shows all operation parameters and allows memory storage of 500 moulding data sets. It also gives warning messages in case of malfunction
- ② Direct input of pressure, speed, position, time, moulding temperature and functions
- ③ Highly accurate potentiometers monitor mould, screw and ejector position
- ④ Built-in PID temperature control program and solid state relays in heater circuit give accurate moulding temperature and durable control circuit
- ⑤ Complies with European CE Safety Standards and China Safety Standards Gb22530
- ⑥ Injection and mould data can be saved in computer or memory card through USB.



## 液壓系統 Hydraulic System

液壓油路符合國家安全標準GB22530，  
配置鎖模安全閥。

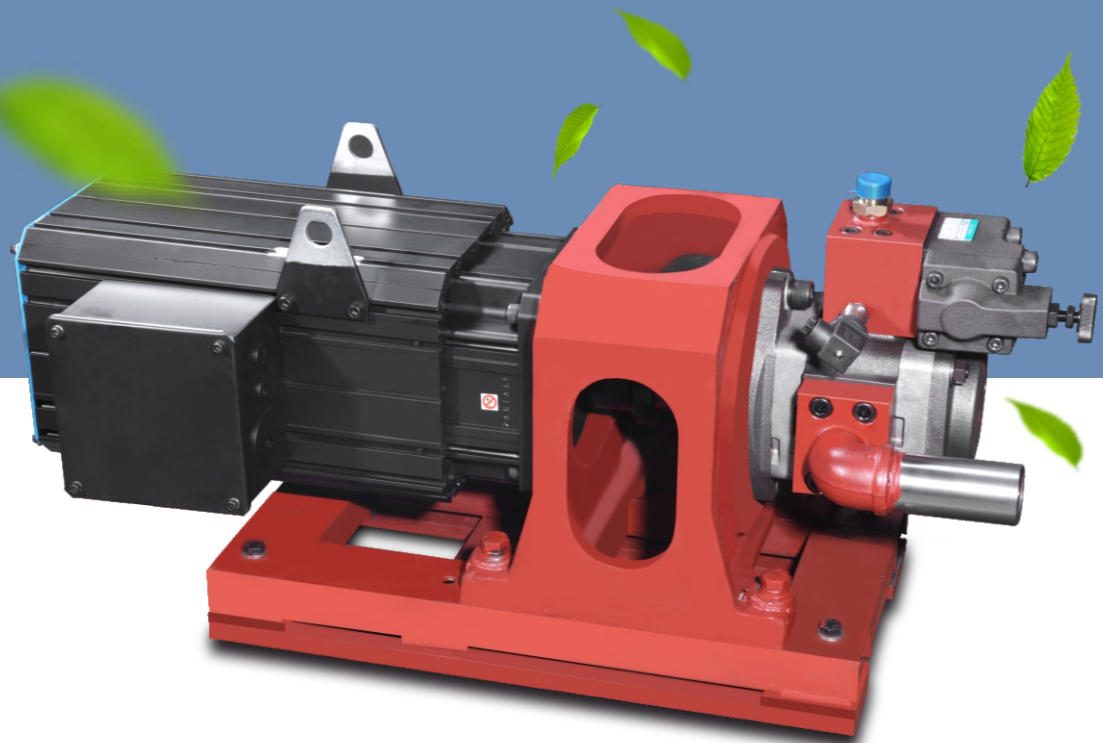
Hydraulic System complies to China Safety  
Standard GB22530



## ECOPOW 伺服節能系統 ECOPOW Servo Motor System

選擇伺服節能系統：高壓內嚙合齒輪泵+電機+驅動器。

The choice of servo motor system allows  
for higher energy saving result and stability in production.



## 伺服節能系統 節能70%

Servo Motor System: Energy Saving up to 70%

## 標準配置 Standard Features

### 鎖模部分

- 差動鎖模控制
- 綫性電子尺控制開合模動作
- 模具低壓保護
- 紅外線電眼控制周期復始
- 調模行程限位裝置
- 5級鎖模壓力，速度獨立控制
- 5級開模壓力，速度獨立控制
- 不退式，震動或多次液壓頂出功能
- 更換模具時，可以選擇慢速開鎖模動作程式
- 安全模塊與安全閥配合確保鎖模安
- 容積式分配器，自動潤滑裝置及控制程式

### 注射部分

- 兩組移臺油缸裝置
- 鍍硬鉻氮化螺桿，氮化料筒
- 綫性電子尺控制注射動作
- 熔膠缺料報警
- 熔膠轉速顯示
- 熔膠背壓裝置
- 移動式卸料門裝置
- 防冷起動螺桿保護
- 時間或位置保壓切換
- 自動清洗料筒程序
- 獨立移臺控制
- 熔膠行程自動計算
- 熔膠前或熔膠後抽膠選擇
- 6級射膠壓力及速度控制
- 圖形顯示射膠壓力及速度設定數值
- 16A單相三孔插座

### Clamping Unit

- Differential hydraulic circuit design
- Potentio-meters for controlling clamping and ejector position
- Low pressure mould protection
- Mould height adjustment limit switch device
- 5 stage independent clamping pressure & speed control
- 5 stage independent mould opening pressure & speed control
- Selection of non-return, vibration or multi-stroke ejection
- Slow mould opening and clamping allowed during mould set-up
- Use of hydraulic safety valve with electrical safety module ensures safety.
- Automatic lubrication device with allocation

### Injection Unit

- Single injection cylinder device
- Double hydraulic carriage cylinders
- Nozzle safety cap
- Nitrided and chromium plated screw & barrel
- Precise potentio-meter for injection control
- Empty hopper warning
- Screw rotation display
- Digitized plasticizing back pressure control
- Moveable hopper
- Screw cold start protection device
- Holding pressure stage transition by time or position
- Automatic purging device
- Independent carriage control
- The screw decompression can be activated either before or after the plasticizing process.
- 6 stage independent injection speed and pressure control
- Graphic display of injection pressure and speed setting
- 16A single phase (220v) electrical socket receptacle

### 控制部分

- 採用PID控制溫度，配合使用固態繼電器ε-控制溫度精度達到±1°C。
- 配置7.4"彩色液晶顯示器，支持21種語言顯示。
- 可以通過SD記憶卡存取模具資料，運行結果，警報資料以及更新畫面程序。
- 設有多層密碼保護，防止資料被更動。
- 備有200套數據儲存記憶，增加外界記憶卡可以存儲更多。
- 支持21種語言顯示。
- 配有儲能射膠，兩組獨立抽芯，六組吹風，封膠針，電眼控制自動循環以及機械手等程序。
- 產品數據統計及自動監控功能，方便用戶進行統計及監控工作。
- 有保溫設定及定時開、關電熱功能，節省等待加熱的時間。
- 完善的警報及提示功能，給維護和操作提供了很大的方便。
- 警報及數值修改記錄200組可以查詢，給操作及維護提供了可追溯性。
- 顯示界面系統，規範，友好，便于操作。
- 主要元件採用進口品牌，保證控制的精度，穩定性及可靠性。  
如：塑殼斷路器，限位開關，急停開關採用法國施耐德品牌。  
電子尺採用英國PI品牌，重復精度可達±0.01mm。
- 規範的接地聯綫，及漏電開關的使用確保操作人員免受電擊的危險。

### Control Unit

- Heater circuit that consists of built-in PID temperature control program and solid state relays.  
Provides precision as high as ±1°C.
- 8.4 inches coloured LCD monitor
- Injection, moulding and warning data can be saved in SD memory card.
- Multi-level password protection、prevents data be mistakenly changed
- Memory storage of 200 moulding data sets (External SD memory card is allowed more data storages)
- Choice of up to 21 language display
- Built-in sequence accumulator, 3 sets of core pulling with 2 sets of air ejector, 2 sets of core pulling with 4 sets of air ejector, photo cell detector and extractor program.
- Operation parameters analysis and automatic malfunction monitoring function
- Timer control for heater circuit saves waiting time and energy.
- Warning signal and reminder allow ease operation.
- Warning signal and reminder allow ease operation
- User friendly monitor system
- Imported control parts ensure precision, stability and reliability.
- Effective ground circuit and leakage breaker can ensure operator's safety.



# JS 300 高級注塑成型機

## JS300 高級注塑成型機系列規格表

JS300 Upgraded Plastic Injection Moulding Machine Series Specifications

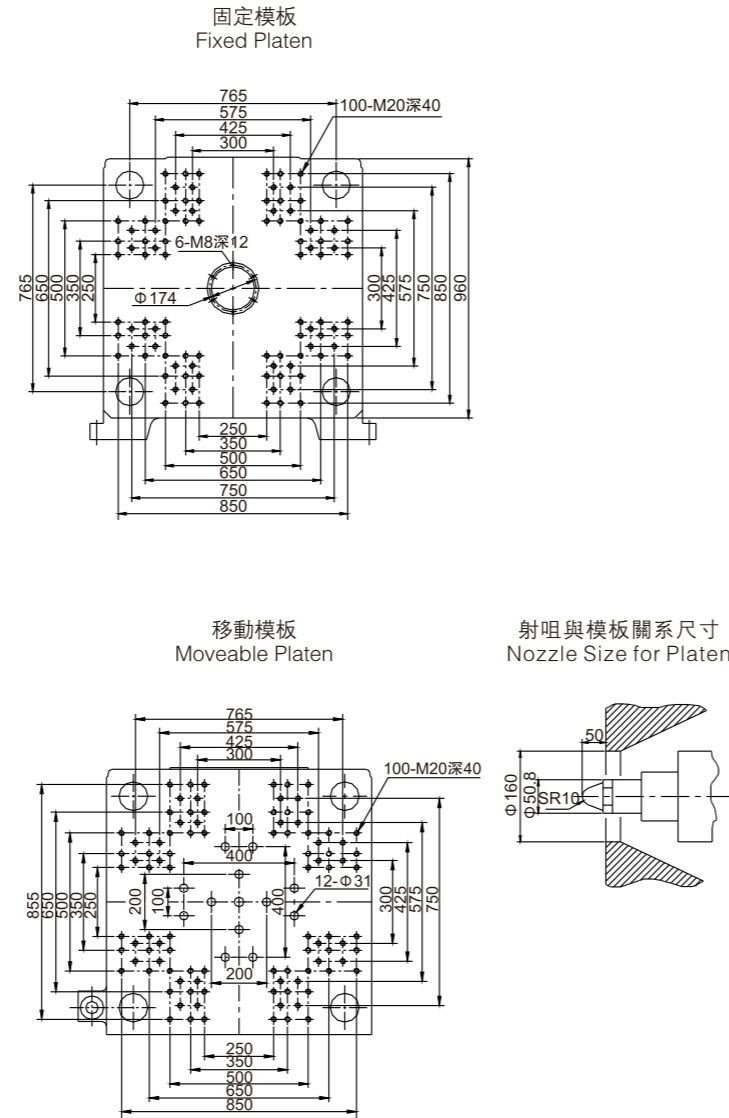
	項目	Item	單位	JS300 (EcoPow伺服系統)		
				A	B	C
注射部分	螺絲編號	Screw Type		A	B	C
	螺絲直徑	Screw Diameter	mm	60	65	70
	螺絲長徑比	Screw L:D Ratio	L:D	19.8	18.3	17.0
	注射壓力	Injection Pressure	kg/cm <sup>2</sup>	1900	1619	1396
	注射重量 (PS)	Shot Weight (PS)	g	714	838	972
			oz	25.2	29.6	34.3
Injection Unit	最高注射率	Injection Rate	cc / sec	224	263	305
	理論注射容積	Injection Rate	cc	848	995	1155
	注射行程	Screw Stroke	mm	300	300	300
	塑化能力 (PS)	Plasticizing Capacity	kg/h	148	186	215
	螺絲轉速	Screw Speed	r.p.m	166	166	166
	射咀接觸力	Nozzle Contact Force	Tons	8.0	8.0	8.0
	料斗容積	Hopper Capacity	L	100		
鎖模部分	鎖模系統類別	Clamping Type		五點式機鉸 Five-Point Vertical Double Toggles		
	鎖模力	Clamping Force	Tons	300		
	鎖模行程	Opening Stroke	mm	580		
	模板最大開距	Max Daylight Opening	mm	1220		
	容模厚度	Mould Height	mm	250-640		
	四柱內距	Space Between Tie-bars	mm	660x660		
Clamping Unit	模板尺寸	Platen Dimension	mm	960x960		
	模具定位孔直徑	Mould Locator Diameter	mm	Φ 150H8		
	頂針力	Ejector Force	ton	8.0		
	頂針行程	Ejector Stroke	mm	145		
	頂針數量	No. of Ejectors	pcs	13		
	系統壓力	System Pressure	kg/cm <sup>2</sup>	160		
其他	油泵電機功率	Electric Motor Power	kW	31		
	電熱功率	Heating Power	kW	14.00		
	溫度控制區	Temperator Control Zones	Zone	3+1		
	總用電量	Gross Power Consumption	kW	45.0		
	油箱容積	Oil Tank Capacity	L	520		
	機器重量	Machine Weight	Tons	12.1		
	外形尺寸(LxWxH)	Machine Dimension (LxWxH)	m x m x m	6.8x1.62x2		

◆ 本公司可以隨時修改以上技術參數而無須預先通知。  
◆ The above specifications can be altered without prior notice

# JS300 UPGRADED PLASTIC INJECTION MOULDING MACHINE SERIES

## JS300 模板尺寸

JS300 Platen Dimension



# JS 425 高級注塑成型機

## JS425 高級注塑成型機系列規格表

JS425 Upgraded Plastic Injection Moulding Machine Series Specifications

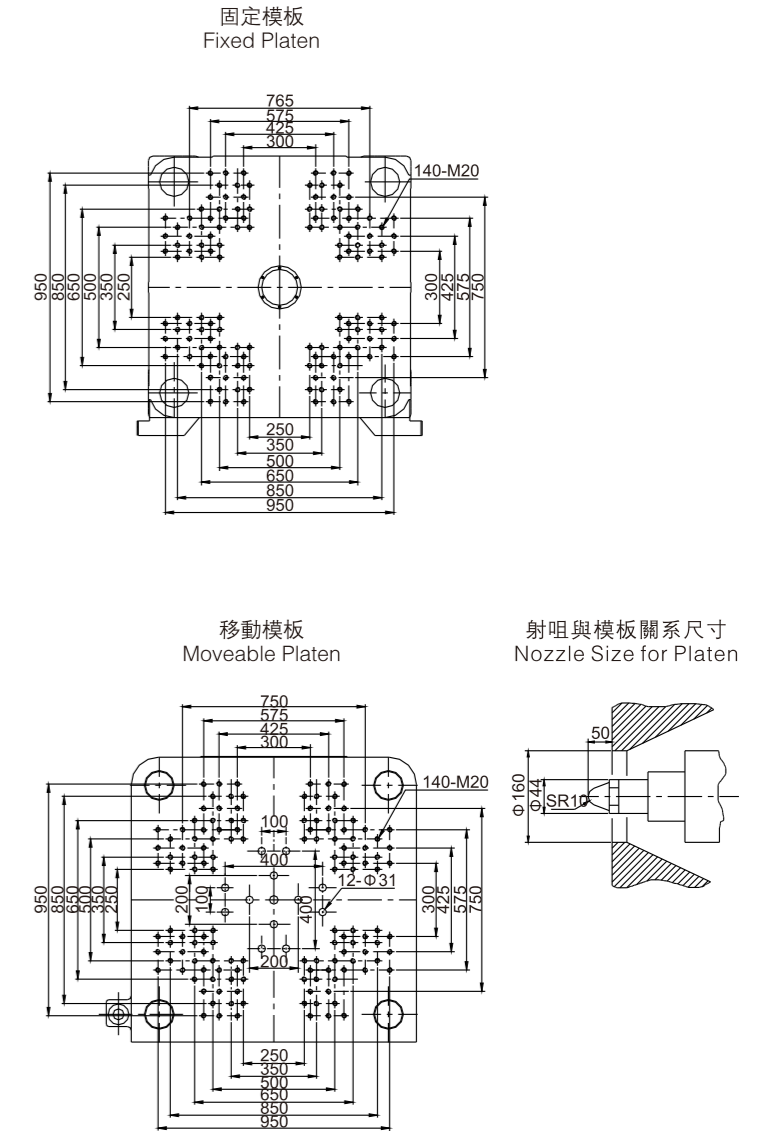
	項目	Item	單位	JS425 (EcoPow伺服系統)		
				A	B	C
注射部分	螺絲編號	Screw Type		A	B	C
	螺絲直徑	Screw Diameter	mm	70	75	80
	螺絲長徑比	Screw L:D Ratio	L:D	21.4	20.0	18.8
	注射壓力	Injection Pressure	kg/cm <sup>2</sup>	1915	1668	1466
	注射重量 (PS)	Shot Weight (PS)	g	1133	1301	1480
			oz	40.1	46.0	52.3
Injection Unit	最高注射率	Injection Rate	cc / sec	331	380	432
	理論注射容積	Injection Rate	cc	1347	1546	1759
	注射行程	Screw Stroke	mm	350	350	350
	塑化能力 (PS)	Plasticizing Capacity	kg/h	232	283	341
	螺絲轉速	Screw Speed	r.p.m	179	179	179
	射咀接觸力	Nozzle Contact Force	Tons	9.7	9.7	9.7
	料斗容積	Hopper Capacity	L	100		
鎖模部分	鎖模系統類別	Clamping Type		五點式機鉸 Five-Point Vertical Double Toggles		
	鎖模力	Clamping Force	Tons	425		
	鎖模行程	Opening Stroke	mm	750		
	模板最大開距	Max Daylight Opening	mm	1550		
	容模厚度	Mould Height	mm	300-800		
	四柱內距	Space Between Tie-bars	mm	810x810		
Clamping Unit	模板尺寸	Platen Dimension	mm	1170x1168		
	模具定位孔直徑	Mould Locator Diameter	mm	Φ 150H8		
	頂針力	Ejector Force	ton	10.2		
	頂針行程	Ejector Stroke	mm	200		
	頂針數量	No. of Ejectors	pcs	13		
	系統壓力	System Pressure	kg/cm <sup>2</sup>	160		
其他	油泵電機功率	Electric Motor Power	kW	39		
	電熱功率	Heating Power	kW	23.30		
	溫度控制區	Temperator Control Zones	Zone	4+1		
	總用電量	Gross Power Consumption	kW	62.7		
	油箱容積	Oil Tank Capacity	L	680		
	機器重量	Machine Weight	Tons	17.5		
	外形尺寸(LxWxH)	Machine Dimension (LxWxH)	m x m x m	8.0x1.66x2.11		

◆ 本公司可以隨時修改以上技術參數而無須預先通知。  
◆ The above specifications can be altered without prior notice

# JS425 UPGRADED PLASTIC INJECTION MOULDING MACHINE SERIES

## JS425 模板尺寸

JS425 Platen Dimension





# JS 550 高級注塑成型機

## JS550 高級注塑成型機系列規格表

JS550 Upgraded Plastic Injection Moulding Machine Series Specifications

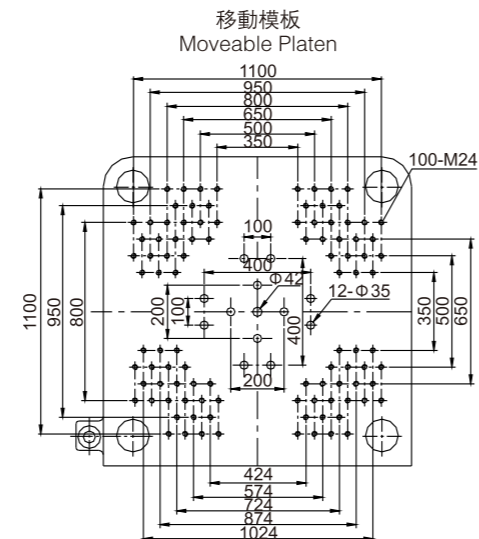
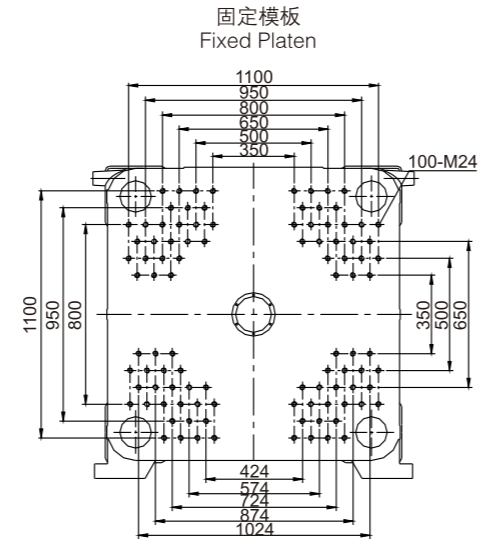
項目	Item	單位 Unit	JS550 (EcoPow伺服系統)			
			A	B	C	
注射部分 Injection Unit	螺絲編號	Screw Type	A	B	C	
	螺絲直徑	Screw Diameter	mm	80	85	90
	螺絲長徑比	Screw L:D Ratio	L:D	21.3	20.0	18.9
	注射壓力	Injection Pressure	kg/cm <sup>2</sup>	1991	1764	1573
	注射重量 (PS)	Shot Weight (PS)	g	2016	2276	2552
			oz	71.2	80.4	90.2
	最高注射率	Injection Rate	cc / sec	392	443	496
	理論注射容積	Injection Rate	cc	1960	2213	2481
	注射行程	Screw Stroke	mm	390	390	390
	塑化能力 (PS)	Plasticizing Capacity	kg/h	305	364	429
螺絲轉速	Screw Speed	r.p.m	131	131	131	
射咀接觸力	Nozzle Contact Force	Tons	12.5	12.5	12.5	
料斗容積	Hopper Capacity	L	100			
鎖模部分 Clamping Unit	鎖模系統類別	Clamping Type	五點式機鉸 Five-Point Vertical Double Toggles			
	鎖模力	Clamping Force	Tons	550		
	鎖模行程	Opening Stroke	mm	850		
	模板最大開距	Max Daylight Opening	mm	1700		
	容模厚度	Mould Height	mm	350-850		
	四柱內距	Space Between Tie-bars	mm	910x910		
	模板尺寸	Platen Dimension	mm	1300x1290		
	模具定位孔直徑	Mould Locator Diameter	mm	Φ 150H8		
	頂針力	Ejector Force	ton	12.6		
	頂針行程	Ejector Stroke	mm	200		
頂針數量	No. of Ejectors	pcs	13			
其他 Others	系統壓力	System Pressure	kg/cm <sup>2</sup>	160		
	油泵電機功率	Electric Motor Power	kW	57		
	電熱功率	Heating Power	kW	30.00		
	溫度控制區	Temperator Control Zones	Zone	4+1		
	總用電量	Gross Power Consumption	kW	87.4		
	油箱容積	Oil Tank Capacity	L	880		
	機器重量	Machine Weight	Tons	23.5		
	外形尺寸(LxWxH)	Machine Dimension (LxWxH)	m x m x m	9.46x1.82x2.2		

- ◆ 本公司可以隨時修改以上技術參數而無須預先通知。
- ◆ The above specifications can be altered without prior notice

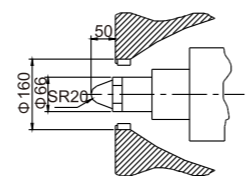
# JS550 UPGRADED PLASTIC INJECTION MOULDING MACHINE SERIES

## JS550 模板尺寸

JS550 Platen Dimension



射咀與模板關係尺寸  
Nozzle Size for Platen



# JS 750 高級注塑成型機

## JS750 高級注塑成型機系列規格表

JS750 Upgraded Plastic Injection Moulding Machine Series Specifications

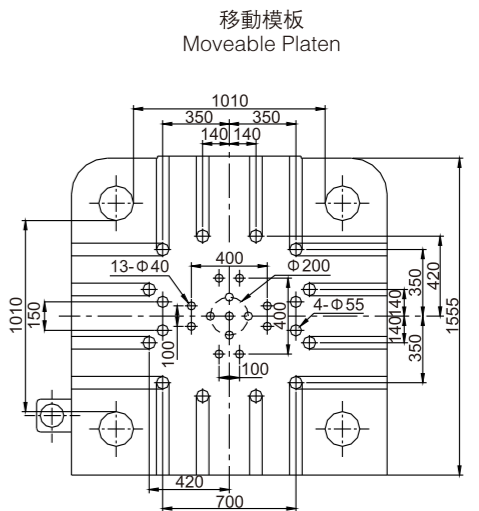
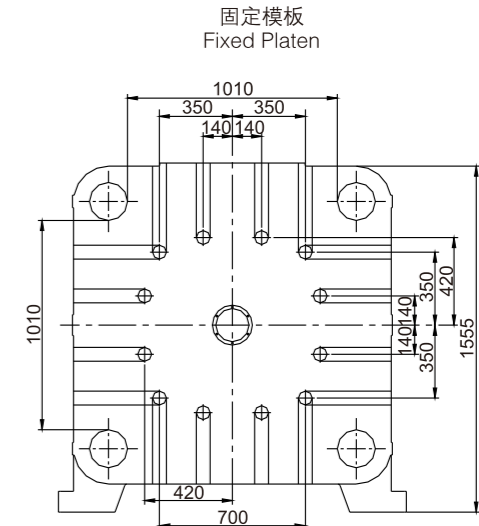
項目	Item	單位 Unit	JS750 (EcoPow伺服系統)			
			A	B	C	
注射部分 Injection Unit	螺絲編號	Screw Type	A	B	C	
	螺絲直徑	Screw Diameter	mm	80	95	110
	螺絲長徑比	Screw L:D Ratio	L:D	23.8	20.0	17.3
	注射壓力	Injection Pressure	kg/cm <sup>2</sup>	2399	1702	1269
	注射重量 (PS)	Shot Weight (PS)	g	1861	2624	3519
			oz	65.8	92.7	124.3
	最高注射率	Injection Rate	cc / sec	433	611	820
	理論注射容積	Injection Rate	cc	2212	3119	4181
	注射行程	Screw Stroke	mm	440	440	440
	塑化能力 (PS)	Plasticizing Capacity	kg/h	215	321	452
螺絲轉速	Screw Speed	r.p.m	113	113	113	
射咀接觸力	Nozzle Contact Force	Tons	16.7	16.7	16.7	
料斗容積	Hopper Capacity	L	220			
鎖模部分 Clamping Unit	鎖模系統類別	Clamping Type	五點式機鉸 Five-Point Vertical Double Toggles			
	鎖模力	Clamping Force	Tons	750		
	鎖模行程	Opening Stroke	mm	1050		
	模板最大開距	Max Daylight Opening	mm	2050		
	容模厚度	Mould Height	mm	400-1000		
	四柱內距	Space Between Tie-bars	mm	1010x1010		
	模板尺寸	Platen Dimension	mm	1540x1545		
	模具定位孔直徑	Mould Locator Diameter	mm	Φ 150H8		
	頂針力	Ejector Force	ton	22.3		
	頂針行程	Ejector Stroke	mm	250		
頂針數量	No. of Ejectors	pcs	17			
其他 Others	系統壓力	System Pressure	kg/cm <sup>2</sup>	175		
	油泵電機功率	Electric Motor Power	kW	69		
	電熱功率	Heating Power	kW	40.00		
	溫度控制區	Temperator Control Zones	Zone	6+1		
	總用電量	Gross Power Consumption	kW	109.0		
	油箱容積	Oil Tank Capacity	L	1000		
	機器重量	Machine Weight	Tons	38.8		
	外形尺寸(LxWxH)	Machine Dimension (LxWxH)	m x m x m	10.46x2.37x2.3		

- ◆ 本公司可以隨時修改以上技術參數而無須預先通知。
- ◆ The above specifications can be altered without prior notice

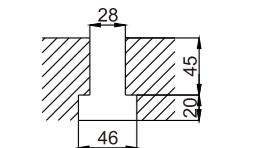
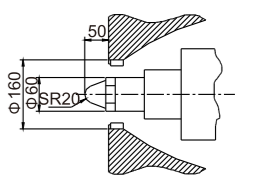
# JS750 UPGRADED PLASTIC INJECTION MOULDING MACHINE SERIES

## JS750 模板尺寸

JS750 Platen Dimension



射咀與模板關係尺寸  
Nozzle Size for Platen





# JS 1000 高級注塑成型機

## JS1000 UPGRADED PLASTIC INJECTION MOULDING MACHINE SERIES

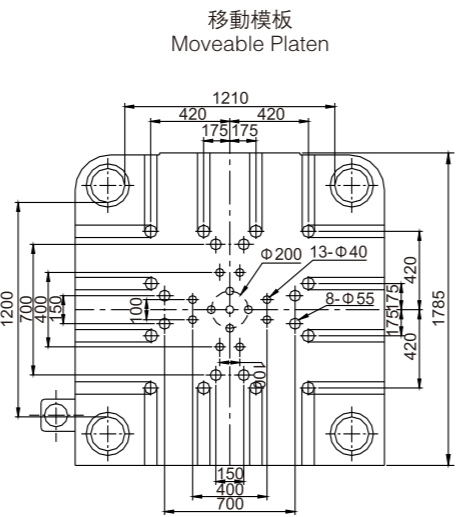
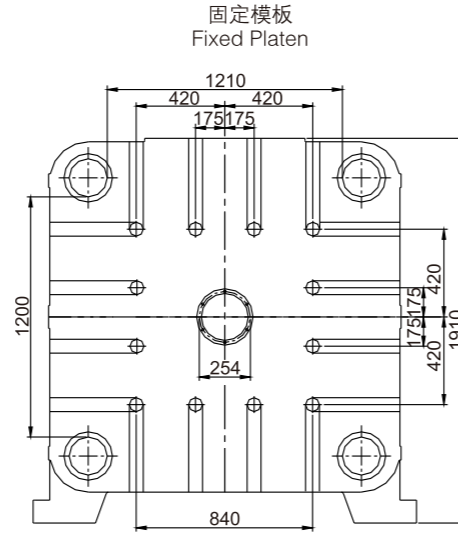
JS1000 高級注塑成型機系列規格表

JS1000 Upgraded Plastic Injection Moulding Machine Series Specifications

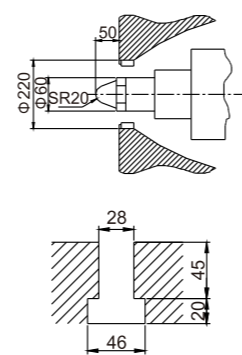
項目	Item	單位 Unit	JS1000 (EcoPow伺服系統)			
			A	B	C	
注射部分	螺絲編號	Screw Type	A	B	C	
	螺絲直徑	Screw Diameter	mm	95	110	125
	螺絲長徑比	Screw L:D Ratio	L:D	23.2	20.0	17.6
	注射壓力	Injection Pressure	kg/cm <sup>2</sup>	2358	1759	1362
	注射重量 (PS)	Shot Weight (PS)	g	3310	4438	5731
			oz	117.0	156.8	202.5
Injection Unit	最高注射率	Injection Rate	cc / sec	538	722	932
	理論注射容積	Injection Rate	cc	3934	5274	6811
	注射行程	Screw Stroke	mm	555	555	555
	塑化能力 (PS)	Plasticizing Capacity	kg/h	269	408	557
	螺絲轉速	Screw Speed	r.p.m	98	98	98
	射咀接觸力	Nozzle Contact Force	Tons	15.4	15.4	15.4
料斗容積	Hopper Capacity	L	220			
鎖模部分	鎖模系統類別	Clamping Type	五點式機鉸 Five-Point Vertical Double Toggles			
	鎖模力	Clamping Force	Tons	1000		
	鎖模行程	Opening Stroke	mm	1150		
	模板最大開距	Max Daylight Opening	mm	2300		
	容模厚度	Mould Height	mm	450-1150		
	四柱內距	Space Between Tie-bars	mm	1210x1210		
Clamping Unit	模板尺寸	Platen Dimension	mm	1770x1760		
	模具定位孔直徑	Mould Locator Diameter	mm	Φ200H8		
	頂針力	Ejector Force	ton	27.5		
	頂針行程	Ejector Stroke	mm	350		
	頂針數量	No. of Ejectors	pcs	17		
	系統壓力	System Pressure	kg/cm <sup>2</sup>	175		
其他	油泵電機功率	Electric Motor Power	kW	80		
	電熱功率	Heating Power	kW	54.00		
	溫度控制區	Temperator Control Zones	Zone	6+1		
	總用電量	Gross Power Consumption	kW	134.0		
	油箱容積	Oil Tank Capacity	L	1700		
	機器重量	Machine Weight	Tons	47.4		
外形尺寸(LxWxH)	Machine Dimension (LxWxH)	m x m x m	11.7x2.7x2.5			

JS1000 模板尺寸

JS1000 Platen Dimension



射咀與模板關係尺寸  
Nozzle Size for Platen



# JS 1300 高級注塑成型機

## JS1300 UPGRADED PLASTIC INJECTION MOULDING MACHINE SERIES

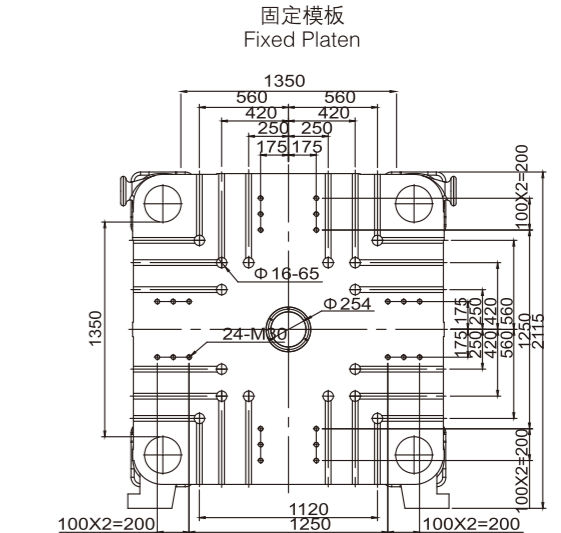
JS1300 高級注塑成型機系列規格表

JS1300 Upgraded Plastic Injection Moulding Machine Series Specifications

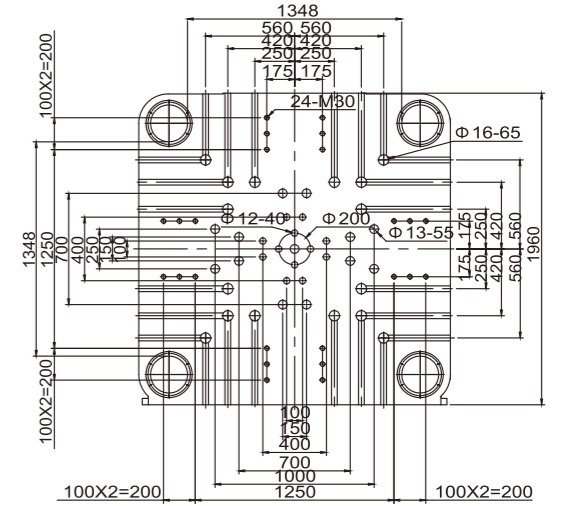
項目	Item	單位 Unit	JS1300 (EcoPow伺服系統)			
			A	B	C	
注射部分	螺絲編號	Screw Type	A	B	C	
	螺絲直徑	Screw Diameter	mm	110	125	135
	螺絲長徑比	Screw L:D Ratio	L:D	22.7	20.0	18.5
	注射壓力	Injection Pressure	kg/cm <sup>2</sup>	2363	1830	1569
	注射重量 (PS)	Shot Weight (PS)	g	5038	6506	7588
			oz	178.0	229.9	268.1
Injection Unit	最高注射率	Injection Rate	cc / sec	750	969	1130
	理論注射容積	Injection Rate	cc	5987	7731	9018
	注射行程	Screw Stroke	mm	630	630	630
	塑化能力 (PS)	Plasticizing Capacity	kg/h	480	643	777
	螺絲轉速	Screw Speed	r.p.m	113	113	113
	射咀接觸力	Nozzle Contact Force	Tons	15.4	15.4	15.4
料斗容積	Hopper Capacity	L	220			
鎖模部分	鎖模系統類別	Clamping Type	五點式機鉸 Five-Point Vertical Double Toggles			
	鎖模力	Clamping Force	Tons	1300		
	鎖模行程	Opening Stroke	mm	1400		
	模板最大開距	Max Daylight Opening	mm	2700		
	容模厚度	Mould Height	mm	450-1300		
	四柱內距	Space Between Tie-bars	mm	1350x1350		
Clamping Unit	模板尺寸	Platen Dimension	mm	1950x1950		
	模具定位孔直徑	Mould Locator Diameter	mm	Φ200H8		
	頂針力	Ejector Force	ton	27.5		
	頂針行程	Ejector Stroke	mm	400		
	頂針數量	No. of Ejectors	pcs	21		
	系統壓力	System Pressure	kg/cm <sup>2</sup>	175		
其他	油泵電機功率	Electric Motor Power	kW	124		
	電熱功率	Heating Power	kW	64.00		
	溫度控制區	Temperator Control Zones	Zone	6+1		
	總用電量	Gross Power Consumption	kW	188.0		
	油箱容積	Oil Tank Capacity	L	1800		
	機器重量	Machine Weight	Tons	70.0		
外形尺寸(LxWxH)	Machine Dimension (LxWxH)	m x m x m	14.45x3.2x3.36			

JS1300 模板尺寸

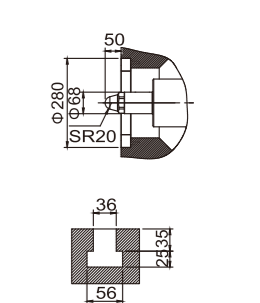
JS1300 Platen Dimension



移動模板  
Moveable Platen



射咀與模板關係尺寸  
Nozzle Size for Platen



◆ 本公司可以隨時修改以上技術參數而無須預先通知。  
◆ The above specifications can be altered without prior notice

◆ 本公司可以隨時修改以上技術參數而無須預先通知。  
◆ The above specifications can be altered without prior notice



# JS 1600 高級注塑成型機

## JS1600 UPGRADED PLASTIC INJECTION MOULDING MACHINE SERIES

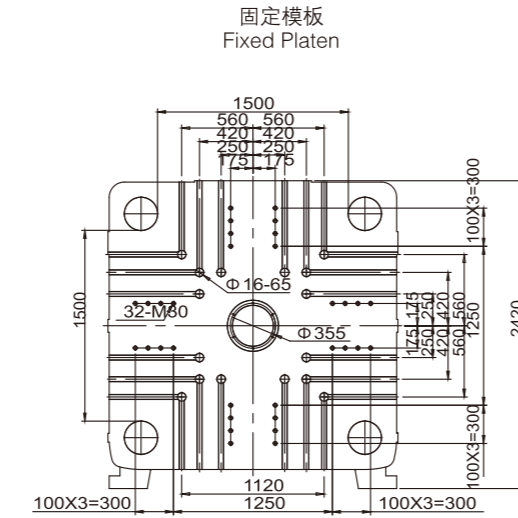
### JS1600 高級注塑成型機系列規格表

#### JS1600 Upgraded Plastic Injection Moulding Machine Series Specifications

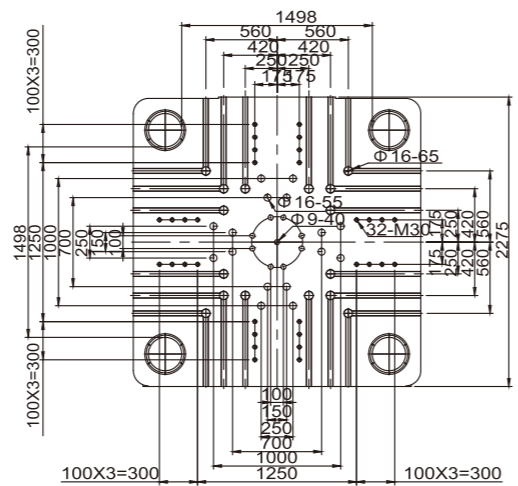
項目	Item	單位 Unit	JS1600 (EcoPow伺服系統)			
			A	B	C	
注射部分 Injection Unit	螺桿編號	Screw Type	A	B	C	
	螺桿直徑	Screw Diameter	mm	125	135	150
	螺桿長徑比	Screw L:D Ratio	L:D	21.6	20.0	20.0
	注射壓力	Injection Pressure	kg/cm <sup>2</sup>	1886	1617	1309
	注射重量 (PS)	Shot Weight (PS)	g	6764	7890	9740
			oz	239.0	278.8	344.2
	最高注射率	Injection Rate	cc / sec	940	1097	1354
	理論注射容積	Injection Rate	cc	8038	9376	11575
	注射行程	Screw Stroke	mm	655	655	655
	塑化能力 (PS)	Plasticizing Capacity	kg/h	544	680	840
螺桿轉速	Screw Speed	r.p.m	94	94	94	
射咀接觸力	Nozzle Contact Force	Tons	15.4	15.4	15.4	
料斗容積	Hopper Capacity	L		220		
鎖模部分 Clamping Unit	鎖模系統類別	Clamping Type	五點式機鉸 Five-Point Vertical Double Toggles			
	鎖模力	Clamping Force	Tons	1600		
	鎖模行程	Opening Stroke	mm	1550		
	模板最大開距	Max Daylight Opening	mm	3050		
	容模厚度	Mould Height	mm	800-1500		
	四柱內距	Space Between Tie-bars	mm	1500x1500		
	模板尺寸	Platen Dimension	mm	2260x2260		
	模具定位孔直徑	Mould Locator Diameter	mm	Φ315H8		
	頂針力	Ejector Force	ton	27.5		
	頂針行程	Ejector Stroke	mm	400		
頂針數量	No. of Ejectors	pcs	21			
其他 Others	系統壓力	System Pressure	kg/cm <sup>2</sup>	175		
	油泵電機功率	Electric Motor Power	kW	124		
	電熱功率	Heating Power	kW	76.30		
	溫度控制區	Temperator Control Zones	Zone	8+1		
	總用電量	Gross Power Consumption	kW	200.3		
	油箱容積	Oil Tank Capacity	L	1900		
	機器重量	Machine Weight	Tons	90.0		
外形尺寸(LxWxH)	Machine Dimension (LxWxH)	m x m x m	15.9x3.45x3.41			

### JS1600 模板尺寸

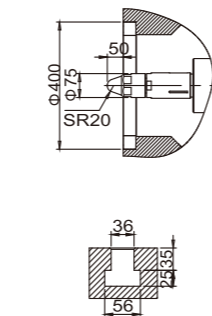
#### JS1600 Platen Dimension



### 移動模板 Moveable Platen



### 射咀與模板關係尺寸 Nozzle Size for Platen



# JS 2000 高級注塑成型機

## JS2000 UPGRADED PLASTIC INJECTION MOULDING MACHINE SERIES

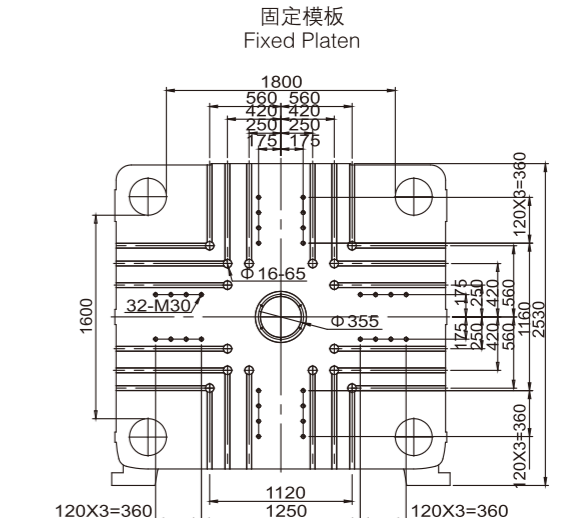
### JS2000 高級注塑成型機系列規格表

#### JS2000 Upgraded Plastic Injection Moulding Machine Series Specifications

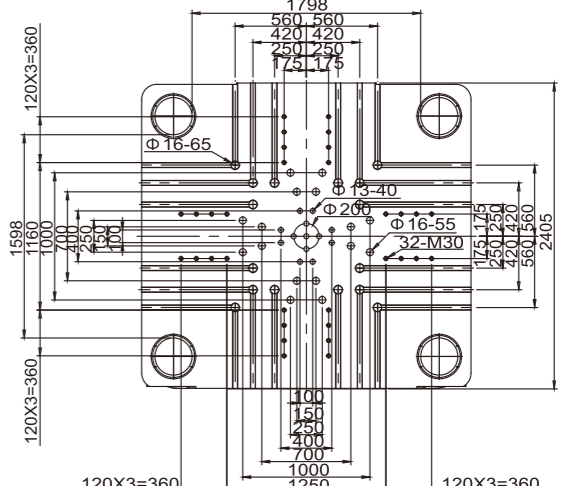
項目	Item	單位 Unit	JS2000 (EcoPow伺服系統)			
			A	B	C	
注射部分 Injection Unit	螺桿編號	Screw Type	A	B	C	
	螺桿直徑	Screw Diameter	mm	125	135	150
	螺桿長徑比	Screw L:D Ratio	L:D	21.6	20.0	20.0
	注射壓力	Injection Pressure	kg/cm <sup>2</sup>	1886	1617	1309
	注射重量 (PS)	Shot Weight (PS)	g	6764	7890	9740
			oz	239.0	278.8	344.2
	最高注射率	Injection Rate	cc / sec	940	1097	1354
	理論注射容積	Injection Rate	cc	8038	9376	11575
	注射行程	Screw Stroke	mm	655	655	655
	塑化能力 (PS)	Plasticizing Capacity	kg/h	544	680	840
螺桿轉速	Screw Speed	r.p.m	94	94	94	
射咀接觸力	Nozzle Contact Force	Tons	15.4	15.4	15.4	
料斗容積	Hopper Capacity	L		220		
鎖模部分 Clamping Unit	鎖模系統類別	Clamping Type	五點式機鉸 Five-Point Vertical Double Toggles			
	鎖模力	Clamping Force	Tons	2000		
	鎖模行程	Opening Stroke	mm	1730		
	模板最大開距	Max Daylight Opening	mm	3530		
	容模厚度	Mould Height	mm	900-1800		
	四柱內距	Space Between Tie-bars	mm	1800x1600		
	模板尺寸	Platen Dimension	mm	2590x2390		
	模具定位孔直徑	Mould Locator Diameter	mm	Φ315H8		
	頂針力	Ejector Force	ton	33.3		
	頂針行程	Ejector Stroke	mm	400		
頂針數量	No. of Ejectors	pcs	29			
其他 Others	系統壓力	System Pressure	kg/cm <sup>2</sup>	175		
	油泵電機功率	Electric Motor Power	kW	124		
	電熱功率	Heating Power	kW	76.30		
	溫度控制區	Temperator Control Zones	Zone	8+1		
	總用電量	Gross Power Consumption	kW	200.3		
	油箱容積	Oil Tank Capacity	L	1900		
	機器重量	Machine Weight	Tons	90.0		
外形尺寸(LxWxH)	Machine Dimension (LxWxH)	m x m x m	16.2X3.5X3.41			

### JS2000 模板尺寸

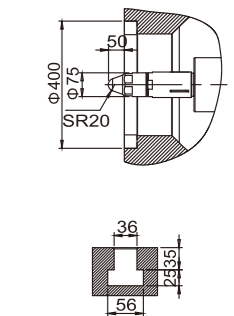
#### JS2000 Platen Dimension



### 移動模板 Moveable Platen



### 射咀與模板關係尺寸 Nozzle Size for Platen



◆ 本公司可以隨時修改以上技術參數而無須預先通知。  
◆ The above specifications can be altered without prior notice

◆ 本公司可以隨時修改以上技術參數而無須預先通知。  
◆ The above specifications can be altered without prior notice